

20 Fourth Street, Petaluma, California 94952
707-778-4398 Fax: 707-762-3923
www.petalumamuseum.com

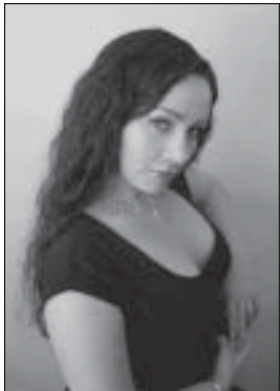


UPDATE

Petaluma Museum Association
Bi-Monthly Newsletter

Volume 20, Issue 4

August/September 2010



The PMA presents

*Jillian
Boye*

The renowned acoustics at the Museum resonate operatic solos on **August 28 at 4 p.m.** when noted

Bay Area concert soloist Jillian Boye performs at our historic landmark.

Soprano Boye began her professional career at the age of 19 with the Opera San José. In 2008 she received the Encouragement Award at the Metropolitan Opera National Council Auditions. She also holds the Young Artist Award from the Holt Competition and the grand prize in the San Jose Opera Guild Competition.

Her coming engagements include the role of Pousette in *Manon* with Opera San José and the role of Lola in *Cavalleria Rusticana* with Livermore Valley Opera.

Other appearances include *Carmina Burana*, *Serenade to Music*, *Misa Criolla*, *Exultate Jubilate*, and the world premiere of Nielsen's *Out of Africa* with organizations such as Symphony Silicon Valley, Sierra Symphony, South Valley Symphony, American Philharmonic and Ballet San Jose.

Tickets for the concert are \$15 for Museum Association members or \$20 for non-members.

Works of Master Maritime Painter comes to Petaluma Museum

The art of Hans Skalagard is featured in the Petaluma Museum's newest exhibit, *Taut Lines and Full Canvas: Pacific Coast Lumber Schooners*. This collection of fifteen dramatic paintings focuses on the local schooners which were critical to California's lumber demand of the late 1800s.



Skalagard in his studio

"The demands of navigating the Pacific could be quite intense for the crew on board a lumber schooner," explains Joe Noriel, Museum president. "Skalagard's lifelike renderings give the viewer a sense on what life

(Continued on page 6)



The Vietnam Experience

A Soldier's Story

Sept. 16th - Nov. 28th, 2010

Read more on page 4

**Petaluma Museum Association
Mission Statement:**

“To preserve the history of Petaluma and the surrounding area; to provide educational and cultural services to the community which stimulate interest in the history of Petaluma; to undertake fund-raising activities to preserve, enlarge, and exhibit the Museum’s collections.”

**Petaluma Museum Association
Board of Directors:**

President:
Joe Noriel

Vice President:
Brian Granados

Treasurer:
Pat Donegan

Recording Secretary:
Kit Schlich

Directors:
Dan Brown
Liz Cohee
Don Phoenix
Gloria Robinson
Mark Tomlinson
Marshall West

Historian:
Katherine J. Rinehart

Historic SPARC Representative:
Bill Wolpert

UPDATE is a bimonthly publication of the Petaluma Museum Association. Many thanks to all contributors to this issue and to Katie Watts for donating her proofreading skills.

UPDATE Contributors: The deadline for information to be included in the October/November 2010 issue of UPDATE is September 10th. Any news or item of interest is welcome. Submissions can be placed in the newsletter box in the Museum office, faxed to 762-3923 or e-mailed to newsletter@petalumamuseum.com.

PRESIDENT’S MESSAGE

Hello Fellow Members,

One of my favorite things about being a part of the Museum is meeting all the talented people who come through our doors.

I am honored that the Museum is hosting the work of a very special artist, Hans Skalagard. A Petaluma resident, Hans has reached international acclaim with his maritime paintings. An experienced seaman and marine historian, he is an artist who has lived within his subject matter which is reflected in the realism of his work. At 86 he shows no signs of slowing down, he still gets up at 5 a.m. to work on his paintings.

This exhibit is an opportunity for all of us to appreciate the work of a man who has truly spent his life *under sail*.

Kind regards, Joe Noriel

Elvis! Grace and Grit breaks record!

Elvis fans came in droves to the Museum’s *Grace and Grit* exhibit. In 55 days more than 5,400 people shook, rattled and rolled their way through the exhibit - possibly surpassing all prior attendance records. A big thanks to everyone who contributed to the success of the exhibit.

Liz Cohee	Pat Donegan
Chris Everett	Barbara Hardin
Susan Henning	Natalie Noriel
Wally Noriel	Gloria Robinson
Faith Ross	Kit Schlich
Marsha Trent	All his many fans!

Contest for PMA Members only!

Do you have friends or family who might be interested in a Museum membership? Now is the time to sign them up. The first 10 people who refer a new member will receive a limited edition signed lithograph by Hans Skalagard.