



Petaluma Historical
Library & Museum

Petaluma Museum Association

Preserving the Unique History of Petaluma and Providing
Educational and Cultural Services to the Community

Quarterly Newsletter



*We are pleased to announce the return of "I Do!"
An exhibition of vintage wedding attire, artifacts
and photos from the Museum's collection.*

Opening on June 10, 2018

Spring/Summer 2018

VOLUME 28, ISSUE 2

On the Cover

by Solange Russek & Barbara Maxwell

“Shades of Vows Past”

AMONG THE MANY different styles of wedding outfits that will be displayed in our upcoming “I Do” exhibit are those in non-traditional hues. These colorful and vibrant frocks could be used again after the wedding day for other occasions, making them a practical alternative to white.

On the front cover the PHL&M’s collection features the following:

The “Paprika” dress of Lizzy J. Miller, who married George Rodehaver, features a skirt with a long pleat lined with a cream-colored insert, connected by decorative cording. Mr. Rodehaver was a Petaluma businessman in real estate and insurance.

Mrs. Cora Belle McCartney, who married Daniel Y. Miller, wore an aubergine (eggplant-colored) outfit with velvet bodice front panels and a skirt with ruching and pleats.

The creamy white outfit belonged to Jessie Brown Gummer. Jessie was one of the first students to graduate Petaluma High School in the 1880’s. The bodice is trimmed in lace and the skirt contains tiers, pleats and ribbons.

Pictured below:



Hoppy Hopkins donated a brown-striped taffeta bodice and skirt that belonged to his family. Some details are lace cuffs, pleats and bustle.

Finally, our mysterious Mrs. Hein wore a silk ensemble of a black and copper-striped bodice and skirt for her 3rd marriage. We call her “mysterious” due to the fact

that there is little information about her. These outfits showcase the varied and beautiful designs of wedding attire worn during the 19th century. They are just a few select examples of the bridal finery in our extensive textile collection.



Petaluma Museum Association Board

Executive Officers

President: Kathy Fries
Vice President: Debbie Countouriotis
Treasurer: Erica Barlas, CPA
Recording Secretary: Kit Schlich

Directors:

Clint Gilbert
Rob Girolo
Kate Hawker
Freyda Ravitz
Michael Slade
Elizabeth Walter
Marshall West

Parks & Recreation Dept.

Drew Halter

Recreation Music and Parks Commission

Sara Sass Representative

Historic and Cultural Preservation Committee

Kit Schlich, Representative

Staff:

Angela Ryan, **Executive Director**

Liz Cohee, **Museum Coordinator**

Mary Rowe, **Membership & Newsletter Editor**

Solange Russek, **Collections Manager**

The Petaluma Museum Association Newsletter is published quarterly and distributed to our members. Many thanks to all our contributors and to our proofreaders and volunteers who help with our mailings.

If you would like to contribute any news or item of interest to our newsletter you can email to

mary@petalumamuseum.com

Deadline for submission is June 15, 2018

Petaluma Museum Association
20 Fourth St.
Petaluma, CA 94952



President's Message

Happy Spring, PMA Supporters!

We ended January with a birthday concert for Mozart & Schubert, then we kicked off Black History Month with our Annual Jazz Concert featuring the doRian Mode and the opening of our annual Black History Month exhibit, this year titled "Reflections" and added a Children's Story Time. We continued our Third Wednesday Dialogue series with the Petalumans of Yesteryear presenting the story of Petaluma's Carnegie Library. If you missed their fabulous performance you're in luck, an encore performance is being planned for the fall.

We Marched (sorry, couldn't resist) into Women's History Month, celebrating with art, poetry and music, including a vibrant art exhibit entitled, "Women and the Search for Wisdom." It was a full month, with the Braslavsky Ensemble Concert, a Monday evening lecture and musical series with Kayleen Asbo, and a series of Sunday salons including "The Myth of Inanna" Presentation by Nancy Castille, "Petaluma Ladies' Improvement Club: Municipal Housekeepers of the Past" Presentation by local favorites, Katherine Rinehart and John Sheehy, and "Return to the Garden" Salon and Poetry Reading with Kayleen Asbo and special guests.

We also held a few non-exhibit related events in March. We had our second New Member/Volunteer Orientation, our Wednesday Dialogue series brought Greg Sarris to discuss his new book, "How a Mountain Was Made" (signed copies available in our gift shop) and local Miwok history, and we ended the month with our Bourbon (& Rye) Pairing Dinner Fundraiser. A big thank you to Preferred Sonoma Caterers and Wilibee's for partnering with us. And thank you to all our volunteers who help at all of our events.

In April we held a surprise reception for Paula Freund, presenting her the David Byrd Award from the California Council for the Promotion of History for her work as curator of the "Portraits of Petaluma Pioneers" exhibit. (Thanks to Petaluma Coffee & Tea for providing coffee for the morning event.) The following Sunday we had local author (and past PMA board member) Ken Nugent discussing his new historical novel "Petaluma Slough" (signed copies available in our gift shop).

Next up is our Third Wednesday Dialogue series, "The River, The Railroad and the Making of Modern Petaluma" presented by John FitzGerald, with select Petalumans of Yesteryear. Then there's History Week with the Butter & Egg Days Opening Ceremony,

immediately followed by our Birthday Party and Bill Hammerman Bench Dedication Ceremony. The next day is the 3rd Annual History Trail Walk with the Petalumans of Yesteryear. And of course ending the month with the Annual Butter & Egg Days Parade, with preferred seating for PMA members on the Museum front steps. Wave and cheer as our 1925 Chevy Egg Delivery Truck passes by.

The Historic Downtown Walking Tours resume Saturday mornings in May and there's a rumor the Sunday tours will return this year. We will continue with our Third Wednesday Dialogues on May 16th with "The Homes and History of Petaluma's D Street Neighborhood" presented by Katherine Rinehart, and our Annual Jura Margulis Concert is scheduled for May 25th.

The Collections crew are busy preparing for this summer's "I Do" exhibit of vintage wedding dresses, with an Opening Reception on June 10th. We hope you'll join us. Also in June we will be extending our Sunday hours to 10am to 4pm, hoping to be more accessible to weekend visitors. When you stop by, be sure to stroll into our updated parlor exhibit to see our newly acquired loan from the McNear family (details on page 3).

The Fundraiser Committee has been busy preparing for this year's annual Gala. Celebrating 40 years, the theme is from 1978: *Saturday Night Fever!* So dig out your polyester and dancing shoes and boogie with us at the Elks Lodge on November 3rd. We're also looking for live and silent auction items for the event, as well as wine donations for our 40/40 Wine Raffle. Please contact us if you can help.

And finally, an update on our wonderful PMA Board of Directors. We recently said goodbye to a few board members who moved on to life's next adventures: John Crowley, Sarah Jochumson and Dianne Ledou. That leaves our board with a few openings, including the crucial spot of Volunteer Coordinator, so if you're interested in joining a great group of museum supporters, please get in touch.

Take a look at our list of upcoming events and exhibits on page 12 and visit us soon. Thank you for your continued support to preserve Petaluma's history.

Kathy Barron-Fries

Executive Director's Corner

Many wonderful events happening at YOUR museum!*Angela Ryan*

It's a great time to be a fan of Petaluma History! With History Week upon us and so many wonderful events happening at YOUR museum, there's something for everyone who loves preserving our past. I'm excited to be experiencing my first Butter & Egg Days, from the Good Egg to History Week to the Parade, it's all new to me and quite fun! It's amazing to see such enthusiastic support for local traditions and heritage. It's what makes Petaluma so special.

We've been busy at the museum with plans for our 40th anniversary year. Hopefully you've noticed our brand new logo, courtesy of talented local designer Lisa Krieshok. It's quite momentous to be celebrating 40 years of preserving Petaluma history. It's a mission that we don't take lightly, and while we keep one eye on the past, we're also always looking to the future. We're currently planning for exhibits as far out as 2021! That means you don't have to worry about getting your local history fix for years to come!

Focusing on the future also means that we are dreaming big. One dream of many folks around here has been an updated internet presence so that the museum's website is user-friendly, easy to navigate and home to up-to-date, accessible information about all of the wonderful things we're doing. I'm beyond thrilled to announce that *very soon* we will have a new website to unveil to the public. All credit is due to the team of students at SRJC who took on this project and have been professional and diligent partners. Thanks to museum member and new Petaluman of Yesteryear KC Greaney for suggesting to me that we pursue this opportunity.

One final piece of very big news that I want to share with you is in regards to our Membership Drive that we launched last year. As I write this, we are within a *few hundred dollars* of reaching our goal. When we raise \$10,000 in new memberships, an anonymous donor will give us a matching gift of \$10,000! This is a tremendous accomplishment for our museum, so thank you to each and every member for helping us get across the finish line. And a special thank you to our anonymous donor—we are so fortunate and grateful to have you in our corner!



Pictured above, flanking GP McNear Sr., from left to right: Michael Lanham, Barbara Maxwell, Angela Ryan, Solange Russek, Skip Sommer and Nick Rodkin

On Friday March 30, the Petaluma Historical Library & Museum proudly welcomed the installation of an exquisite work of art depicting George Plummer McNear Sr. The oil painting is the work of S. Seymour Thomas, whose other works include a portrait of Woodrow Wilson that currently hangs in the White House.

The portrait is the gift of McNear's descendants, including Geoffrey and Walter Stern, whose grandmother Louise McNear (Naffziger) was the second daughter of GP Sr. The portrait will be on loan to the Petaluma Museum for 30 years.

Perceptive viewers will notice that in the portrait George is wearing a signet ring on his left hand. Geoff, Walter and their cousins have graciously included that very ring, with its "McN" engraving, with the portrait so that they can be displayed together.

The portrait was delivered to the museum by a representative of Lawrence Fine Art Services named Nick Rodkin, who just so happens to be a Petaluma native. He was a 2001 Petaluma High graduate, and went on to earn his BA in History of the Americas and Africa at UC Santa Cruz. Nick currently lives in Oakland, but took advantage of the visit to his hometown to invite his parents to check out the portrait and join them for lunch downtown.

On your next visit to the museum, spend some time in the parlor on the first floor with George Plummer McNear Sr. and his family, whose portraits surround him.

Preserving Petaluma's Heritage for 30 Years!

By Katherine J. Rinehart

NOTE: This is an edited version of an article that appeared in our newsletter ten years ago on the occasion of our 30th anniversary. This year, as we celebrate our 40th, we look back on the history of the Petaluma Historical Library & Museum.



Founding Members

Petaluma was one of the earliest communities to apply for and receive Carnegie funding which allowed them to construct the magnificent two-story library at the corner of B and Fourth Streets that is the crown jewel of the downtown.

This neo-classic revival building exemplifies Petaluma's civic achievements of the early 20th century. Brainerd Jones was the architect and his design reflects the influence of the Chicago World's Fair and the City Beautiful movement.

The corner stone was laid on June 4, 1904. Local craftsmen William Stradling, R.W. Moller, Richard Haskins, J.R. Nesbitt and E.W.M. Evans to name just a few were employed in the construction. Wood framed, the building is faced with locally quarried stone and Alameda pressed bricks from McNear's Brickyard in San Rafael. The building opened in 1906 and served

the community well over the years, but by 1962 library administrators realized that the existing structure was too small.

Petaluma's population had grown significantly since 1906 and a larger and more centrally located library was needed. A bond measure was put to the Petaluma voters and was rejected twice before passing in 1974. On July 12, 1976 the new library opened its doors on Fairgrounds Drive.

New life was given to the "old" library thanks in large part to the Bicentennial Committee who, in April of 1975, requested that the building be given landmark status. In their application to the Historic and Cultural Preservation Committee, the Bicentennial Committee also proposed that the building be used as a museum once the library moved out. The Historic and Cultural Preservation Committee supported this idea. Those voting in favor were Barbara Lind, John Eliassen and Fred Schram.

In December of 1976, the Petaluma City Council made it official. The Carnegie Library became Petaluma's first official landmark and plans for its conversion for use as an historical library and museum were approved.

The Petaluma Historical Library and Museum was dedicated on October 22, 1978. The first board of directors was Stan Della Maggiora, Ed Mannion, Nicky Frye, Phyllis Rankin, Betsy Ashman, Thelma Westerterp, Aletha Olmsted, Leolean Hopkins and Barbara McCorkel.

We owe these founding members and countless volunteers a debt of gratitude for preserving Petaluma's heritage for all of us, residents and tourists alike, to appreciate these past 30 years.

Last year over 10,000 visitors walked through the Museum's doors, many of them children who participate in the Museum's educational programs or participate in story time during the summer months.

The Museum has an amazing treasure trove of artifacts including thousands of historic photographs, many of which are included in permanent and rotating exhibits as well as accessible to researchers in its library.

SMT SPAULDING
McCULLOUGH
& TANSIL LLP

WARREN L. DRANIT
ATTORNEY AT LAW

Tel 707 524 1900 Santa Rosa
Tel 707 283 0000 Petaluma
dranit@smlaw.com

90 South E Street Suite 200
Santa Rosa CA 95404

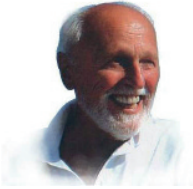
11 Western Avenue
Petaluma CA 94952
www.smlaw.com



STEVEN J. LAFRANCHI & ASSOCIATES, INC.
CIVIL ENGINEERS - LAND SURVEYORS - LAND PLANNERS

STEVEN J. LAFRANCHI, P.E., P.L.S.
PRESIDENT

PETALUMA THEATRE SQUARE
140 SECOND STREET • SUITE 312 • PETALUMA, CA 94952
TEL 707-762-3122 FAX 707-762-3239
steve@sjla.com



Petaluma History & Commentary by Skip Sommer

THE DREES FAMILY, PETALUMA PIONEERS

AUGUST AND JOHANNA Drees arrived in California in 1853, after a harrowing trip around Cape Horn. The couple had been born in Bremen, Germany and had experienced there the depression years of 1837-40. They wanted a new start in life and the "Golden Territory of California" had become a beacon to them.

But unfortunately, the California gold had mostly run out by 1853 and August was forced to urgently seek any job that could pay their keep in California. They came to the Petaluma valley, saved their money, and eventually were able to purchase a half-ownership in the small Franklin Hotel on Main Street. The Drees advertised that the Franklin provided "an abundantly supplied table, pleasant sleeping compartments and a fine billiard saloon." August and Johanna had eight children here, the eldest of whom was Emil, born in 1864. The American Civil War had torn the country—and our county of Sonoma—apart; but by 1864, the end of that tragedy was finally in sight.

Republican Abraham Lincoln was running for his second term in 1864, and August Drees, while firmly believing in the Democrats' mantra of "States Rights," also believed in the Republican anti-slavery platform. He was torn and in the middle of the road. A real quandary here, because the Union Central Committee (Northern Federals) was meeting in the offices of The Petaluma Journal-Argus, while the Democratic Convention (Southern Rebels), was held in the offices of The Santa Rosa Democrat newspaper. As a result of this fracture in Santa Rosa, Sonoma County was to be the only County in the State of California that didn't vote for Abe Lincoln in 1864!

The Petaluma Journal-Argus accused The S.R. Democrat's editors of being "Copperhead Snakes" and of

fomenting "treason and national disloyalty." While, in Santa Rosa, they were speaking of Petaluma in even nastier words. Each camp had their guns at the ready, as local war was thought to be imminent. About that time, the Petaluma Baptist Church (as well as other churches) came out publicly against slavery and that had settled young Emil Drees's personal controversy. He was a Democrat, but against slavery. He too, became a firm middle-of-the-roader.

It was to be decades before a Democrat would be elected to any public office in Petaluma, and that person was Emil Drees. Drees had pushed for better roads, sewers, sidewalks, bridges and flood control here. He recognized the importance of the Petaluma River and promised to improve the dockage. In 1892, at the age of 27, Emil Drees became the youngest person ever to be elected Mayor of Petaluma.



Drees home corner of A St and Liberty St

1892 was a year of great progress here. That year one could purchase "a comfortable seven room house on a 22,000 sq. ft. corner lot, with well, windmill, large stable, tank house, a bargain at \$1,800." Entertainment at the Petaluma Theater included this tantalizing ad: "Mrs. A.M. Potts, Famous Quakeress, speaking on "love, courtship and marriage . . . as good as an hour with Mark Twain. 25 cents. *Women Only.*" (Scandalous!)

Petaluma's "East Side," (anything east of the river then), was really cooking in '92. The Carlson and Currier Silk Company was moving to town, with the promise of employing up to 300 Petalumans in its mill, and they were to use Petaluma firms for their construction. The City Fathers were so impressed, they pledged \$15,000 toward the construction costs and our own John McNear sold them the lot on Jefferson

Street. The poultry industry was bubbling too, thanks to Lyman Byce, and his new incubator invention. Both the Golden Eagle and McNear Mills were expanding, the RR depot was bustling, streets were being macadamized and sidewalks installed all over town. The river was to be improved to the tune of \$30,000, as well. (Surprise! the river needed dredging!) To attest to all the activity making a *BIG* difference, our Petaluma Weekly Imprint newspaper bragged that: "36 teams were seen on Main Street last Saturday!" (Be still, my heart!)



Golden Eagle Mill 1892 at site of current Grocery Outlet

Emil Drees was still Mayor of Petaluma in April of 1906 when the disastrous SF earthquake struck. Hearing that Santa Rosa was in dire need of help, while Petaluma was virtually undamaged, Drees ordered the NW Pacific RR to deliver food, supplies and medical aid to that quake-leveled city. That first day in Santa Rosa, Petaluma firemen found eleven bodies and rescued many more from under the debris. Drees's efforts brought the two communities closer, after 40 years of

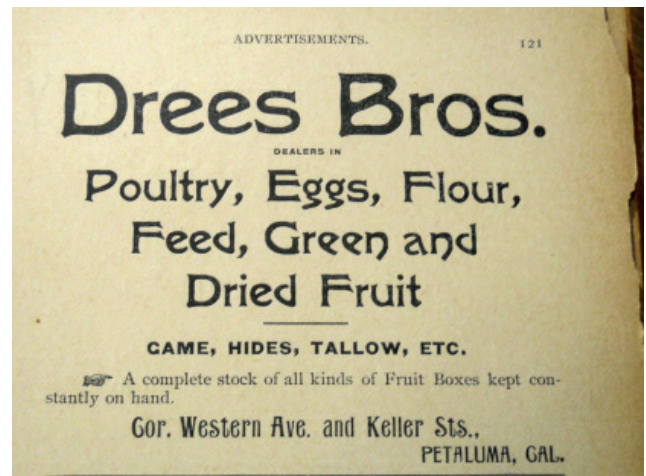


Santa Rosa after 1906 Earthquake

Civil War bitterness.

Also, while standing upon a hilltop in Petaluma that April afternoon in '06, Mayor Drees viewed the smoke rising from San Francisco and he responded by directing the Steamer Gold to load-up with eggs and other supplies, as well as doctors for the stricken city, down-river . . . yet another effort by the popular mayor that would be remembered in our local history.

Eleven years later, Emil Drees became the Democratic State Assemblyman representing Petaluma. He had well learned the politics of staying in the middle of the road from his father. This very active man, who had maintained memberships in the local Masons, Elks, Odd Fellows and Yeoman Clubs, was also to be elected Justice of the Peace for Sonoma County, Postmaster of Petaluma and later even became a Municipal Judge.



In 1894, Emil Drees married Emma Gossage, the daughter of California pioneer Jerome Gossage. Emil and Emma had two children, and they constructed a fine five-bedroom home on the corner of A and Liberty Streets (just painted royal blue in 2018). Early-on, Emil and his brother, "Gus," had taken over the family produce and poultry business, following their father's death, and they built it into one of Petaluma's largest poultry and egg dealerships. To ensure business stability, they also dealt in hides, tallow and wild game to ship down-river.

Emma Gossage Drees passed away in 1924, and Judge Drees in 1931. Emma and Emil's son, Adolph, married Lucy Lawler. Lucy Lawler Drees, an excellent early California artist, managed the Drees Florist Shop at 215 Western Avenue for many years. Many descendants of the pioneer Drees family live in Sonoma County, with branches spreading into the Lawler, Premo and Aker families. The Drees still own numerous properties here, and continue to make important contributions to the history of our "Small Town In The West."

MUSEUM HIGHLIGHTS



Black History Month

We kicked off Black History Month on Feb. 2 with our 6th annual Jazz concert featuring vintage jazz & blues group the doRian Mode. This year the exhibit's theme was *Reflections*, telling the story of Petaluma's black population since the 1800's. The Petaluma Blacks for Community Development were celebrating 40 years of black history and included a video compilation of the many events held throughout the years.

Women's History Month

During month of March we celebrated Women's History Month with a curated exhibit of art on the theme of "*Women and the Search for Wisdom*". The curators of the exhibit were Kayleen Asbo and Nancy Castille. Angela Ryan and Freyda Ravitz were instrumental in the installation of the art work with the help of Jamie Frattarelli, Michael Lanham and Solange Russek. There was a flurry of activity at the museum as the public enjoyed music, lectures, poetry and literature during this very well-attended exhibit.



Kayleen Asbo gives a talk on *Eve and Mary Magdalene and the Return to the Garden*; a moving and inspiring evening of lecture, poetry and music.



Myth of Inanna presentation
by Nancy Castille



Katherine Rinehart and John Sheehy talked about the *Petaluma Ladies' Improvement Club: Municipal Housekeepers of the Past*.



Guests enjoy the delicious food paired with a bourbon tasting.

Bourbon Pairing/Dinner Fundraiser

The tables were filled with attendees for our annual pairing and dinner which happened on March 29th. Guests tasted each bourbon as representatives from Sonoma County Distilling, Moylans Distilling Company and Willibeets Wines & Spirits shared insights about its unique qualities and Amber Balshaw of Preferred Sonoma Caterers described the dish that was paired with it. The general agreement was that all had a very enjoyable evening. Thank you to all our wonderful hard working volunteers who made this event a memorable one.

Third Wednesday Dialogues at the Museum have been a popular addition to our events schedule!

Petalumans of Yesteryear gave a wonderful presentation on the founding of Petaluma's Carnegie Library on Feb. 21.

In March Greg Sarris, Chairman of the Federated Tribes of Graton Rancheria, gave a talk about his newly published book "*How a Mountain was Made*", a collection of children's stories based on Miwok lore.

Our April event was an enlightening and entertaining evening as Research Librarian John FitzGerald and select Petalumans of Yesteryear guided us through Petaluma history, with a focus on the development of the river, the railroad, and the making of Modern Petaluma.

John's lecture included a wonderful slide presentation with maps and photos. The audience was also delighted when he interacted with select Petaluma Pioneers who were scattered amongst the seated guest. They each told a fun anecdote connecting the river, the railroad and Petaluma.



Sherrie Ortegren as Adi Atwater & Jerry Pozo as John Augustus McNear presentation of the founding Petaluma's Carnegie Library



John FitzGerald begins his presentation



Mike Glose as Fred Wiseman



LOCAL AUTHOR AND historian Ken Nugent gave a talk and slide presentation about his recently published book *Petaluma Slough, A Novel*.

Ken spoke about his research process, the inspiration for writing his novel which came from a near-death experience, the loss of a close friend and he ended with a reading from the book that enthralled the crowd. Signed copies of his novel are available for purchase from the museum gift shop.

Help us bring the Parlor Tour back!

Our Holiday Lighted Parlor Tour is in the evening of the first Sunday of December. This tour is a beloved holiday tradition for many, being the start of the holiday season for them.

The committee seeks historic homes to open their living and dining rooms—decorated for the holidays—to tour-goers from 6:00 to 9:00 p.m. All proceeds from the tour supports the Petaluma Museum Association.

If you are interested please contact the museum office at 778-4398.



P.O. BOX 192484 • SAN FRANCISCO • CA 94119-2484
 OFFICE 415-674-0175 • FAX 415-674-0180 • CELL 415-517-3211
 bc@costarellaseafoods.com • www.costarellaseafoods.com

Tilak Raj Shukla
 President
 1410 S. McDowell Blvd. #E
 Petaluma, CA 94954
 B: 707-765-1232
 C: 707-364-7703
 trshuk@gmail.com

Adobe Beverages and Foods, Inc.

America's Yesteryears
 Exhibits, Research, Educational

Don Siemens
 Historic & Clinical Ecology

P.O. Box 218
 Bodega Bay
 CA, 94923

707-364-1643
 Desiem@comcast.net

PETALUMA
 RADIO
 PLAYERS

'Like Talking On-Air!'

RALPH SCOTT
 Supervising Producer

ralph@
 petalumaradioplayers.com
 (707) 971-9419

VOLUNTEER SPOTLIGHT

by Mary Rowe



back to school this year to start working toward a degree.

Where are you from?

I have lived in Rohnert Park my whole life, but I've always felt that Petaluma had more personality and I love visiting the antique shops.

What made you decide to volunteer at the museum?

My first love is archaeology, but I'm not outdoorsy enough to make a career of it so I thought it would be nice to volunteer at a museum to get a feel for other options. I chose the Petaluma Museum largely because of the research library, as historical research is one of my main hobbies

Are you working on any special projects for the museum?

Currently, I'm cataloguing the Bojorques family history and having a blast. It's teaching me far more about California history than my high school ever did.



Ilana Dunkle

Ilana started volunteering at the museum in March of this year. I asked her these questions and here are her responses.

Could you give a short bio about yourself?

I tested out of high school a little early and attended the SRJC for several years. I

didn't do very well, mostly due to not knowing what I actually wanted out of my education. Then I got the idea to join the Navy. I hurt my back in boot camp and was discharged. In hindsight, I don't think I was the best fit for the Navy. Now, I'm really enjoying working in the museum and looking forward to going

PAULA FREUND RECIPIENT OF PRESTIGIOUS HISTORICAL AWARD



Photo credit-Scott Hess

Paula Freund, art historian and former PMA board member, was awarded the "David Byrd Certificate of Meritorious Performance & Promise" by the California Council for the Promotion of History for her work as the chief researcher,

historian, and curator of the groundbreaking historical exhibit "Portraits of Petaluma Pioneers" presented last summer at the Petaluma Historical Library & Museum.

Freund was cited for her tenacity, adeptness, and mastery, not only in her archival research, but in the organizing, digitizing, and display of the exhibit and its companion exhibition on the petalumapioneers.org website, where highlights of the exhibit can still be viewed.

Drawing from her background as an art historian, Freund was able to bring not only a historical perspective of the early pioneer settlers to Petaluma, but also a broader understanding of the development of photography in the mid-19th

century and its impact on our sense of time, mortality, and self-image.

Visitorship to the Petaluma Historical Museum dramatically increased as a direct result of the exhibit and the accompanying lecture series which Freund coordinated, ranging from such topics as the conservation, preservation and restoration of photographic materials to a presentation on the genealogy of a Petaluma pioneering family. Freund herself kicked the series off with a captivating lecture on the early history of Petaluma and its intersection with early photography.

The "David Byrd Certificate of Meritorious Performance & Promise" is awarded annually by the California Council for the Promotion of History to an individual, organization, or agency accomplishing an outstanding contribution to the promotion of history.

Freund was presented with a beautiful etched blue glass award at a surprise ceremony at the museum on April 8th. Those present included Mayor Glass, who spoke about Paula's tireless commitment to civic pride and progress, which just so happens to be the theme of her next exhibit at the museum, opening October 2018 on the history Petaluma's Carnegie Library. Mark your calendars, it's sure to be another award-winner!

HISTORICAL NEWS OF PETALUMA

by Solange Russek & Michael Slade

We would like to acknowledge the California Digital Newspaper (CDN) Program of UC Riverside, the source of all of the items that are going to be presented in this column. The CDN Collection is a project of the Center for Bibliographical Studies and Research (CBSR) at the University of California, Riverside. The CDN Collection is supported in part by the U.S. Institute of Museum and Library Services under the provisions of the Library Services and Technology Act, administered in California by the State Librarian.

San Francisco Call, September 8, 1912

KNOT IS TIED UNDER OAKS

Two Hundred at McNear Wedding

[Special Dispatch to The Call]

PETALUMA, Sept. 7.—Miss Miriam McNear, daughter of Mr. and Mrs. George P. McNear, was married here today to Leo Victor Korbel of San Rafael. Rev. E. H. McCollister, pastor of the Episcopal church of Santa Cruz, read the service. The wedding guests numbered about 200.

"Fairview," the McNear home, were decorated elaborately, the color scheme being pink. The ceremony was performed under the oaks. The bridal party was led by little Marda Leppo, the flower girl, and George Leppo, the ring bearer, who preceded the maid of honor, Miss Amy Scoville. Miss Louise McNear, sister of the bride, led the bridesmaids, who were Miss Christine McNab, San Francisco; Miss Amy Lita Talbot, Washington, D. C.; Miss Ila Sonntag, San Francisco, and Miss Elsa Korbel, San Rafael.

The bride was given in marriage by her father. She wore a robe of white charmeuse, heavily trimmed in pearls and lace. Her tulle veil was caught with a spray of orange blossoms and she carried a shower of orchids and lilies of the valley.

Arleigh Lemberger was best man, while the ushers were Almy Seabury, Berkeley; Dudley Cates, San Francisco; Claude Mellerish, San Francisco, and George P. McNear Jr.

Korbel is a son of Mr. and Mrs. A. Korbel, residing in San Rafael. He is a graduate of the University of California with the class of 1904 and a member of the Alpha Delta Phi fraternity.

Russian River Flag, July 11, 1866

Go.—A hen will attempt to crow this evening, in Petaluma. The curious had better go down to the "hub" of Sonoma and take notes.

Hot.—On Monday June 25th, at St. Helena, the thermometer stood at 114 degrees in the shade.

There clearly must be a connection between extremely hot weather and hens crowing. How else can the prediction of the attempt to crow be made.

Vestkusten, July, 1866

The Petaluma Courier is convinced that the crop outlook in its vicinity is excellent, and that there is no room there for growlers, whom it invites to move on.

If the crop outlook is excellent, why would anyone complain (growl).

PETALUMA MUSEUM ASSOCIATION: 2018 EVENTS



May 16 at 7 p.m.
Third Wednesday Dialogues:
The Homes and History of
Petaluma's D Street Neighborhood
 Presentation by Katherine Rinehart



June 10
"I Do" Exhibit Opening Reception



May 25 at 7:30 p.m.
Russian Virtuoso Jura Margulis
 Annual PMA Concert



July 4, 10:30 a.m.
Annual Bell-Ringing Ceremony
 Flag Ceremony by the Boy Scouts, Proclamation by the Mayor & more. Ring the Korbel Bell, then cookies & lemonade in the Garden Court.

EXHIBIT SCHEDULE



June - September 2018

"I Do" Exhibit

Vintage wedding attire, artifacts and photos from the Museum collection



October - December 2018

Petaluma Historical Library & Museum,
 A Story of Civic Pride & Progress

You can get free admission to these local & Bay Area museums with your NARM level membership!



The Petaluma Museum Association is proud to be a member of the North American Reciprocal Museum Association (NARM). Our membership in NARM allows us to offer our popular **Supporter Member** level, which provides two membership cards that can be used to gain free/member admission and member benefits at 985 museums across North America!

Since 2014 Patricia Menadier and Marcus Clark have been **Supporter Members** of the PMA, but their association with Petaluma history goes back much farther. See our interview below and learn about the family's connection to Petaluma history and how they've maximized the benefits that come with NARM-level Supporter Membership.

◇ ◇ ◇

What is your connection to Petaluma?

Patricia's grandparents, the Gamboninis, settled in Petaluma in 1928 and established a dairy south of town on the Petaluma River. They were part of a wave of Swiss-Italian immigrants who settled in Northern California in this period, many of whom owned and

operated dairies in the area. We still live on the family property—one of the few private homes on the river—and while it's not a working dairy anymore, it is used as a grazing pasture.

What drew you to the Petaluma Museum?

We are avid museum goers and enjoy supporting the preservation of local history. In the past year alone we have attended the Portraits of Petaluma Pioneers exhibit, the Member Holiday Party, the Black History month exhibit and Jazz Concert, and other events.

How have you made the most of the benefits of your NARM-level Supporter Membership?

We travel a lot, and wherever we go, we seek out the local museums to visit. That's why it made complete sense for us to join at the Supporter level. Just recently, we've visited the Charles M. Schulz Museum, the Walt Disney Family Museum, the Di Rosa, the Palm Springs Art Museum, the Museum of the African Diaspora, the De Young, the Asian Art Museum, the Legion of Honor Museum, and the Oakland Museum of California. It's so great to visit these museums with friends because we each get to bring a guest at most museums. Unofficially, several museums that don't participate in NARM have also allowed us to enter for free when we show our NARM cards!

Why do you feel strongly about investing your museum dollars locally at the Petaluma Museum?

We are strong advocates for the preservation of local heritage, particularly where the river is concerned, given our family history. Petaluma has a really unique history that is important to development of the region and the country. Petaluma is a river town and it's vital that we preserve our history and the local ecosystem along with the town.

◇ ◇ ◇

If you're interested in upgrading your membership to receive NARM benefits, see the membership application located in the back of this Newsletter or call the museum at 707-778-4398.

Petaluma Museum Association
Board of Directors meetings are on the second
Monday of each month at 6:00 pm.
They are open to the public.
Follow us at:
www.petalumamuseum.com
www.facebook.com/PetalumaMuseum
[Twitter@petalumamuseum](https://twitter.com/petalumamuseum)



**Like us on
Facebook:**



Petaluma Historical Museum



**The success of the first
"I Do" exhibit
can be credited to
Teresa Froschl**

by Solange Russek &
Barbara Maxwell

The textile collection that made up the majority of the exhibit was the result of her hard work and dedication to its preservation. Teresa also reached out to local families for loans and family history to enhance the exhibit.

Teresa invested her time in learning how to care for the aging collection. She researched the history of the dresses and Petaluma families who donated them. Teresa helped write a grant that paid for consultation on and construction of Ethafoam mannequins to fit the unique sizes of the wedding dress collection.

Teresa mentored the team of volunteers that helped her get the exhibit up and running.

Teresa consolidated all of the research information, care for the textiles and mannequin designs into a series of binders that can now be utilized for future exhibits.

The 30+ years of work that Teresa accomplished did not stop with the planning of "I Do" but has maintained and enhanced the greater textile collection that can be displayed with ongoing exhibits.

An incredible example is our assemblage of 19th Century Victorian mourning dresses, capes, bodices and bonnets.

The Petaluma Historical Library & Museum and the Petaluma Museum Association are fortunate to have Teresa's expertise in the care and history of the more than 300 items of textiles and accessories in our institution. Teresa's work allows Petaluma residents and visitors to appreciate the unique styles of Petaluma's past.

O: (707) .763 .5475
 F: (707) .778 .8417
 E: info@Wedgeroofing.com

WEDGE
ROOFING

5 Casa Grande Road, Petaluma, CA, 94954 Insured PL & PD Wedgeroofing.com

Century 21

Linda Buffo
REALTOR®, SRES
Your Trusted Partner in Real Estate
CalBRE 01331391

BUNDESEN
616 Petaluma Boulevard South
Petaluma, CA 94952
Mobile 707.696.9368
Office 707.769.9000
Fax 707.762.1032
Email linda.buffo@bundesen.com
Website LindaBuffo.com



Each office is independently owned and operated

**Hale's Hardwood
FLOORING**


Peter Hale

2 Josette Court
Petaluma, CA 94952
peter@haleme.com

Lic. # 675678
Office (707) 769-0599
Cell (707) 217-7847

Kit Lofroos, MA LMT^{NM} | CMT^{CA}

(707)931-8212
by appointment




lofroos.org
State of NM License #2061 | State of CA Certification #14321



**McNEAR'S
RESTAURANT
& MYSTIC THEATER**

23 Petaluma Blvd. N.,
Petaluma, CA 94952
Office: (707) 765-9211
Fax: (707) 765-4671
www.mcnears.com
www.mystictheatre.com

Kenneth O'Donnell
Owner/Booking
Cell: 707-338-8669
ken.mcnears@gmail.com



Elder Financial Protection Network
Ruth W. Robeson, Esq.
Executive Director

17 Keller Street, Suite A
Petaluma, CA 94952
707.981.8403

ruth@efprotection.org
www.efprotection.org



As part of its Fortieth Anniversary Celebration,
The Petaluma Museum Association
 has scheduled a dedicatory exhibit for
 the fall of 2018,

**THE PETALUMA HISTORICAL
 LIBRARY & MUSEUM,
 A STORY OF CIVIC
 PRIDE & PROGRESS**

The exhibit's curator, Paula Freund, is seeking artifacts and documents pertinent to the building's history. If you have photos or memories to share of the PHL&M, especially when it was "The Petaluma Carnegie Library", please contact her at 707-789-0662 or paula@petalumamuseum.com



**CLINT GILBERT
 LIGHTING DESIGN**

510-644-2701
 CLINTBELOVE@GMAIL.COM
 LOVEOFLIGHT.NET

*Make your next event
 SPECIAL!*

CONSULTATION • DESIGN



**American
 Red Cross**

Steve Countouriotis

California Northwest
 Chapter
 5297 Aero Dr.
 Santa Rosa, CA 95403
 Cell (707) 364-3523

scount@yahoo.com



Kenneth J. Nugent, CFP®
 Portfolio Manager/Account Vice President Wealth Management

UBS Financial Services Inc.
 555 California Street, Suite 3400
 San Francisco, CA 94104
 Tel. 415-954-5911, Fax 855-291-9487
 Toll Free 888-283-7103
kenneth.nugent@ubs.com
<http://financialservicesinc.ubs.com/fa/kennethnugent/>

UBS Financial Services Inc. is a subsidiary of UBS AG. www.ubs.com

Cathy Edmondson

REALTOR®
 CalBRE# 01995911



cathy.edmondson@cbnorcal.com
 M. 707.479.3875
 O. 707.775.2233
 165 First Street Petaluma, CA 94952

www.CathyEdmondson.com

Membership

NEW MEMBERS

Joanne Athearn, Ronda Black, Laurie Cameron, Pat Coleman & Rick Suerth, Ken Gertz, Kahryn Hale, Judith Hawkins, Neville Hormuz, Jinx Kinslow, Adrienne Kormos, Kathy Kormos, David Lightfoot, Mary Song-Mali, Marilyn Maslin, Margo McDowell, Deborah McKay, Michelle Millar, Lynne Moquete, Kenneth O'Donnell, Cherly Nelson, Julie Nicholson, Eric Norstad, Judith Pekala, The Petaluma Radio Players, Michele Price, Julie Rinehart, Marilyn Sisler, Vreni Schnirman, Nancy Schultz, Nancy Schwartz, Abigail Smyth, Patricia Souza, Sonoma County History & Genealogy Library, Susan Stoddard, Lese Sykes, Sal Taormina, Nancy Warfield, Patricia Webb, Kathleen Willett

RENEWALS

Richard Altman, Earline Barron, George & Karen Baur, John & Louise Benanti, Karin & Richard Burger, John Burton Victor Chechanover, Linda & John Cheney, Jeanne DeLuca, Warren Dranit, Clint Gilbert, Janet Gracyk Charles & Teresa Meikle Griswold, Gerry Groves, Evelyn Gurevitch, Barbara Harden, Laura Holms, Karen Howard Carole Hyman, Linda Carnes-Jenkins, Steven Kirk, Mary Lill Lee, Sean Lanham, Angela Luffel, Diane Mello Jane & David Meyers, Judith & Irwin Miller, Pam & Bob Nelson, Harry & Ginger Nieuwboer, Jack O'Sullivan Gary & Catherine Podesta, Betty Pagett, Jim Passage, Donna Pontrello, Alice Rebizzo, Maralyn & Hans Riedel Katherine & Bill Rinehart, Gloria Robinson, Sharon Ryan, Sandra Smethhurst & Donald Duffala, Maryann Smyth Summit State Bank, Len & Ruth Svinth, Barbara Jean Veronda, Marilyn Vitalie, David Waterhouse, , Catherine Winters

DONATIONS

Jeanne DeLuca/2017 Annual Appeal
Pat Coleman
Neville Hormuz
Katherine Rinehart in memory
of Ann Harrigan and Allan Henderson
Geoff Stern

Geoff Stern
Laverne Stout/in memory of Joe Moreda
Barbara Jean Veronda
Marilyn Vitalie

LIFETIME MEMBERS

Linda Adams & Ken Larson, Mr. & Mrs. Marv Ashman, Bacchus Real Estate, Garth Bixler & Steven Barclay, Ron Bausman & Art Wagner, Sherri Brungart, Jim Becker, David Best & Margaret Roth, Ann & Gordon Blumenfeld, Walter & Marilyn Bragdon, Tom & Kathy Brandal, Virginia Breedlove, Sherri Brungart, Arthur & Selma Cader, Paul Canorro & Kelly Collins, Joseph & Carol Castillo, Susan Morvay Chappell, Codding Foundation, Clark & Susan Coolidge, James and Liz Cohee, Steve & Judy Collins, Jim & Lori Cornaggia, John Cota & Teresa Barrett, Judy Curtis, Angela E. De Carli, Daniel & Elissa DeCaro & Family, Dennis & Charlene Deen, Marvin & Shirley Dolowitz, Diane Dorfman, Karen & James Ely, June Ferguson, Bonna & George Flynn, C. Michael Forrest, Alice & Donald Forsyth, Jim & Kris Foster, Terry Fraser, Paula Freund & Paul Heavenridge, Kathy & Richard Fries & Family, George & Margaret Gambonini & Family, Marvel Gardner, Cheryl & Derlin German, Marie Isabel Girolo, Robert Girolo, Alexa Glockner, Ken & Annette Goltermann Family, Margaret Gossett, Kathy Greene, Alice Guglielmetti, Connie Hammerman, Matt & Ginny Hautau, Mike & Beth Healy, Toby & Pat Herfindal, Ann Hobrecht, Miriam Hodge, Timothy & Marianne Hurley, Gary & Lynn Imm, Carol Isaak, Helen Issel, Toby Kaehler, William & Denise Kane, Roanne & Davis Kaplow, Steve & Karen Kemmerle, Lucy Kortum, Terry Kosewic, Daniel Krieg, Jack & Verna Krout, Kathleen LaRusso, David & Mary Lee, Rollie & Shirley Leeburg, Catherine Lehmann, Michael Lennon, Paul & Marlene Lewis, Blanch Lieb, Sid & Gerry Lipton, Connie Brandner Loughary, Colleen Mahoney, Theresa & Peter Mahoney, Constance Mahoney, Amy Malaise & Gary Fusco, Peter Masi/Master Cleaners, Charles & Evelyn Matteri, Elizabeth McBride & Don Shaw, Shirley B. McDonald, Mc Dowell Drug Task Force, James & Sue Mc Isaac, Keith & Debbie McNeil, Robert & Virginia Merwin, Max Mickelsen, Flora Mickles, Pierre & Sonja Miremont, Montoya & Associates, Ann Moreno, Tim & Lori Nelson, Tammara Norman & Edwin Hamilton, Dustin O'Brien, Mike O'Brien, Michael Orton, Ross Parkerson, John & Karen Perlis, Edward Peterson, Ray & Ettamarie Peterson, Charles & Mary Pheil, Russel Pleech, Shep Porter, James Power Millwork, Lawrence Reed, Dan & Ann Reed, Ed & Bernadette Ricci, Tim & Deborah Riddle, Katherine & William Rinehart, Walter & Emily Roeder, Rotary Club of Petaluma, Jerry & Mary-dee Roy, Gloria Salick, Warren & Susie Salmons, Nancy Sasser, Kit & Steve Schlich, Richard & Lucille Sharke, Alba Silva, Jeff Smith & Alicia Wallace, Nicole & Dave Snider, Skip Sommer, Springfield Place, Kaye Stack, Clarice Stasz, Thomas & Mary Stelzner, Elaine & Christopher Stevick, Barbara Tornberg, Evan Williams & Elizabeth Tyree, UBS Financial Services, Gene & Lenore Urbain, Larry & Jan Vannucci, Vietnam Veterans of America, Chapter 563, Susan Villa & Family, Volpi's Italian Market, Michael & Elaine Von der Porten, Mary Renner & Linda Vourlogianes, Marcie Waldron, Ruth Walker, Olga Walker, Judy Walters, Jan Widdowson, Lauren Williams, Sarah Young, Scott & Meredith Young, Nick Zaillian, Ruth Zveinieks



MEMBERSHIP BENEFITS & CATEGORIES

BASIC BENEFITS OF ALL MEMBERSHIP CATEGORIES:

- Discounted admission to temporary exhibits (admission to the library & permanent exhibits is free to all)
- Reserved seating at the Butter & Egg Parade
- Subscription to and acknowledgement in the **PMA** newsletter
- Personalized membership card
- 10% off Museum store merchandise
- 10% off gift memberships
- Invitations to previews & receptions

INDIVIDUAL \$35

All Basic Benefits
(\$20 memberships are available in this category to: Seniors, Educators, Students. Military is free)

FAMILY / DUAL \$70

All Basic Benefits, PLUS:
•Extension of Basic Benefits to an additional adult & children in the same household up to age 17
•Two personalized membership cards

RECIPROCAL MUSEUM MEMBERSHIP PRIVILEGES - "Museum Goer" Benefit

If you join the **PMA** at the Supporter level (\$125) or higher, you will receive free or discounted admission to more than 600 museums in the U.S. Some of the top Bay Area participating museums are:

Asian Art Museum • **Walt Disney Family Museum** • **de Young Museum** • **Legion of Honor**
CA Historical Society Museum • **Charles M. Schulz Museum** • **Sonoma County Museum**

SUPPORTER \$125

All Family / Dual Benefits, PLUS:
•**Reciprocal Museum Membership Privileges**

BUSINESS SPONSOR \$150

All Supporter Benefits, PLUS:
•Your business card in the **PMA** newsletter

PATRON \$400

All Supporter Benefits, PLUS:
•Personalized exhibit tour for you and 10 guests
•Listing of your name on the Museum's Donor Wall

COMPANY SPONSOR \$500

All Patron Benefits, PLUS:
•Your company logo in the **PMA** newsletter

BENEFACTOR \$750 +

All Patron Benefits, PLUS:
•Opportunity to be named the benefactor of a temporary exhibit or annual program

CORPORATE SPONSOR \$1,000 +

All Benefactor Benefits, PLUS:
•Your corporation's logo in the **PMA** newsletter

..... Please detach and return the portion below with your payment method.

YES! I want to join the PMA at the level of:

Name: _____

Address: _____

City/State: _____

Zip: _____ Phone: _____

Email: _____

Payment Options:

Enclosed is my check made payable to the **Petaluma Museum Association**

Charge \$ _____ to my
 Visa MasterCard

Card #: _____

Expiration: ____ / ____ 3-digit code: _____

Signature: _____

All membership dues are valid for one year beginning the month of enrollment and are tax deductible as provided by law.

If you prefer, you can join online at petalumamuseum.com, or call 707-778-4398

Petaluma Museum Association
Petaluma Historical Library & Museum
20 Fourth Street
Petaluma, CA 94952-3004



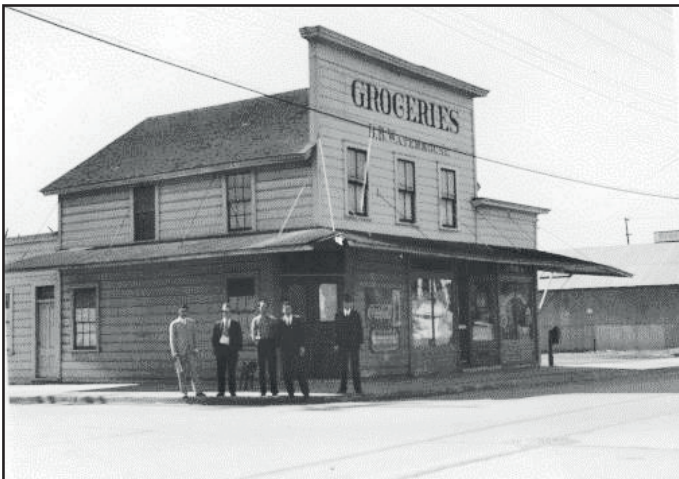
Museum Collection Update

by Solange Russek
Museum Collections Manager

New Donations for Spring 2018

Thank you Edwardine Fratini for your donation of over 300 photos, 500 negatives and multiple scrap books that belonged to your father Ed! The photos range from the 1920s to the 1980s. This batch shows lots of Petaluma images, floods and events we have not seen before. It never fails that there is always something new that we have not seen.

Finding a high quality image of past businesses or events that were a part of Petaluma is especially rewarding. The three images taken in 1935 and 1946 and pictured below fall into that category. One of the joys of working with Ed Fratini's photo collection is that he took the time to identify the people, places, dates and events.



This photo and identification is a great example of Ed's diligence.

Corner East Washington and Wilson St
about 1935
Ed Fratini, B B Waterhouse, -----?
Leo Fratini and Manuel Fernandez

Ed Fratini



The photos pictured above belonged to Ed's brother John, who noted event and date.



I cropped these same photos wondering if that's Lorretta Young in the background? That's my only clue. Can you guess which movie it was?



Petaluma Museum Association
Petaluma Historical Library & Museum
20 Fourth St.
Petaluma, CA 94952
www.petalumamuseum.com

Non Profit Org
U.S. Postage
PAID
Petaluma, CA
Permit No. 301

Change Service Requested

Save the Date!

Petaluma Museum Association's 2nd Annual
Fundraiser Gala

Saturday Night Fever

Celebrate 40 years of the PMA
1978—2018

☆ Food stations by
Preferred Sonoma
Caterers

☆ Wine and Beer
included

☆ No-host cocktail
bar



Join us for a festive
evening to support
the museum and
enjoy live and silent
auctions and a
disco dance party!

Saturday November 3
Petaluma Elks Lodge

WE'RE LOOKING FOR LIVE AND SILENT AUCTION ITEMS, SO IF YOU HAVE A
UNIQUE ITEM OR EXPERIENCE TO DONATE, PLEASE CONTACT US!