

Petaluma Museum Association

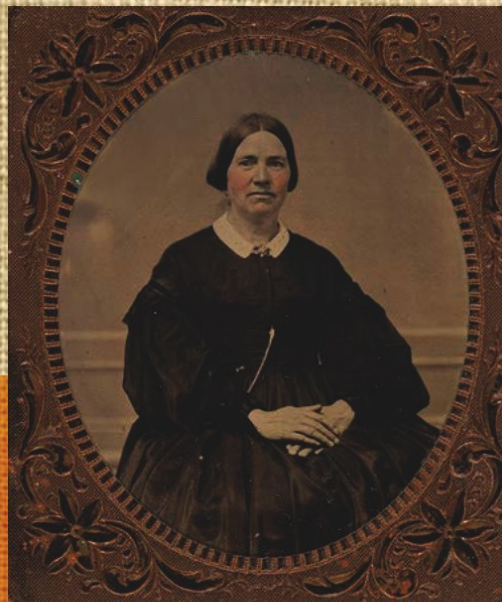
Petaluma Historical Library & Museum

Preserving the Unique History of Petaluma and Providing
Educational and Cultural Services to the Community

Quarterly Newsletter
Special Digital Edition

Petaluma's Participation in the Women's Suffrage Movement

A PMA Exhibit
August 26 - November 8, 2020



George Hays, Petaluma, Cal.



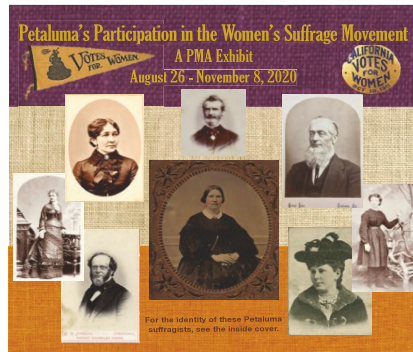
B. R. Johnson, Petaluma, PATENT ENAMELED CARDS.



For the identity of these Petaluma suffragists, see the inside cover.

ON THE COVER

A Collage of Portraits Depicting Petaluma Suffragists



The cover of this edition's newsletter provides a small sampling of the artifacts to be on display at the PMA's upcoming exhibit, "Petaluma's Participation in the Women's Suffrage Movement". Many Petalumans participated in the movement and made significant, early contributions which helped to secure women's right to vote. To learn more about the exhibit and its associated events, scroll down to pages 5 and 6 of this publication.

Collage of Portraits - Identification & Credits:

Prominent in the center of the collage is a copy of a masterful daguerreotype depicting Abigail Ainsley Goodwin Haskell (1819-1884). Recently featured in an *Argus Courier* article written by John Sheehy, she was undoubtedly Petaluma's preeminent suffragist. Above Abigail appears her husband, Barnabus Haskell (1817-1887), a Petaluma merchant who actively supported women's right to vote. Both portraits are from the collection of Abigail's great-great-granddaughter, Ann Nisson.

Moving clockwise from Barnabus is Freeman Parker (1822-1914) (photo courtesy of the Bancroft Library), and next to him is a standing portrait of his daughter, Alma Parker (1856-1938) dressed in bloomers (photo courtesy of Janet Talamantes). Below Alma is Anna Morrison Reed (1849-1921), (photo courtesy of the California State Library). Across the page from Anna is Dr. William Randall Wells (1813-1902), Petaluma's Harvard trained medical doctor (photo courtesy of the Sonoma County Library). Above Dr. Wells is Nellie Denman (1857-1947), (photo courtesy of the Sonoma County Library) and her stepmother, Isabelle Grigsby Denman (1837-1917), (photo courtesy of the Petaluma Historical Library & Museum).

Petaluma Museum Association Board

Executive Officers:

President: Clint Gilbert
Vice President: Debbie Countouriotis
Treasurer: Erica Barlas, CPA
Recording Secretary: Kit Schlich

Directors:

Madeline Backman
Jamieson Bunn
Kathy Fries
Rob Girolo
Kate Hawker
Elece Hempel
Freyda Ravitz
Katie O'Neill Tran
Elizabeth Walter
Marshall West

Parks & Recreation Dept.

Drew Halter

Recreation Music and Parks Commission

Megan Kelly, Representative

Historic and Cultural Preservation Committee

Kit Schlich, Representative

Staff:

Liz Cohee, **Museum Coordinator**
Mary Rowe, **Membership &
Newsletter Editor**
Solange Russek, **Collections Manager**

The Petaluma Museum Association Newsletter is published quarterly and distributed to its members. Many thanks to all the contributors and the proofreaders and volunteers who help with mailings.

If you would like to contribute any news or items of interest to our newsletter, you can email

mary@petalumamuseum.com

Deadline for submission is Sept 1, 2020

Petaluma Museum Association
20 Fourth St.
Petaluma, CA 94952

Message from the President

Greetings, PMA Supporters,



Even as many of us work to envision what our Museum will look like in a post-pandemic world, I'm having trouble remembering the Museum as it once was. I feel empty as I pass by our historic 1906 Carnegie Library building these days and look for signs of life. I see the building yet it feels like something is missing.

Finding our essence seems especially important now as my efforts focus on what I'm calling: Museum 2.0.

My efforts so far broadly fall into three parts:

1. Our HistoryTellers program will create original content for our website, exhibits and publications to preserve the memories and experiences that local people have to tell.
2. New technologies, including QR Codes and produced audio and video pieces, will enrich the Museum experience while allowing us to maintain evolving social distancing requirements.
3. Online access to both our Past Perfect Archival System and much of our Research Library will enable the public greater remote access to our resources.

In the next issue you will be hearing more about items 2 and 3 above, but for now I want to tell you more about our HistoryTellers project.

Petaluma HistoryTellers aims to preserve the stories of Petaluma in short videos that will appear on our website and will be used to add depth and context to our exhibits. Please check out the story "Braiding Rugs" https://youtu.be/d-T_CIAi2-M to get a sense of the simple style and emotional weight this format carries while relating a family history.

The HistoryTellers project features an enviable assemblage of historical knowledge and talent among its advisory board. From our Museum we have noted author and historian John Sheehy and Harlan Osborne who pens the "Toolin' Around" column in the Argus-Courier.

We also have author Katherine J. Rinehart, the Chair of the Sonoma County Heritage Network, and

Connie Williams who is the History Room Librarian at the Petaluma Library. Completing the advisory board is video producer and StoryCenter Facilitator Lou Zweier along with myself. The board is building a list of HistoryTellers and will decide on an order in which to produce their stories. We will have our first meeting later this month.

Have a HistoryTeller to suggest to our advisory board or other suggestion or comment? I'm right here: clint@petalumamuseum.com

In other goings on:

Our volunteer ranks swelled in May with more than a dozen talented historical re-enactment folks when the Petalumans of Yesteryear officially joined us as a committee of the PMA. They are working to create fresh video content for children's treasure hunts, downtown school tours and social media posts. As POY member, Linda Buffo, wrote recently: "...they look not only to educate but to light a spark of interest and excitement in our children so that they may fall in love with the history of their town."

Speaking of social media: I have so much respect for Kathy Barron-Fries' recent rejuvenation of our Facebook and Instagram feeds. She is looking forward to taking an intensive social media training with Kerry Rego who is probably responsible for the way our City's social media has "blown up."

Separated by a pandemic, your Museum staff and volunteers are coming together online to preserve the heart of our Association.

Curious about the QR Code technology? This code will take most modern smartphones to our website just by pointing its camera at the code. Try it!



Until we meet again, perhaps even in person!

Clint Gilbert, your PMA president



A Message from the PMA Board of Directors

Recent tragic events have swept our nation and our world into a powerful outcry for equality and justice. One man's death has galvanized people's consciousness in a way that past atrocities failed to do. George Perry Floyd's unconscionable murder by law enforcement has engendered an international outcry that cannot be ignored.

The Petaluma Museum Association stands in solidarity with all those who have suffered the effects of prejudice and intolerance. "Black Lives Matter" formed as a movement not only to express outrage and demand change but also to educate Americans about past wrongs and misconceptions.

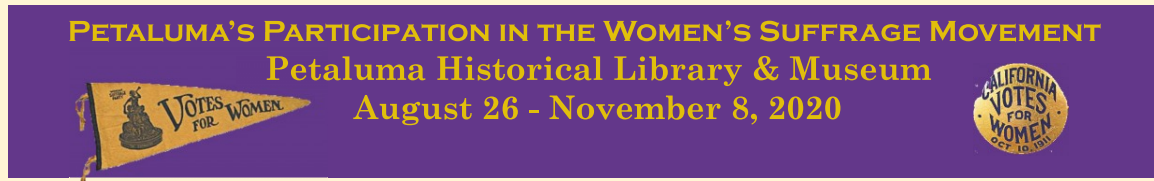
We who form the PMA Board of Directors believe the accurate account of history is a sacred obligation for future generations. History teaches us and guides us to be better as we create a stronger, more diversified future. To that goal, the PMA endeavors to tell our human story as truthfully as possible, relying on artifacts and published material in our archives.

The PMA vows to tell our local history from the vantage point of all those who have called the Petaluma area their home. That includes all races, ethnicities, religions, gender identifications and political persuasions.

We will not flinch from telling unlovely truths about our past as we create future history exhibits and presentations. We pledge never to whitewash our history. We rely on our membership and the viewing public to help correct our past errors and misconceptions.

As Americans we must always remember the words from our Constitution's preamble "to form a more perfect Union." That includes scrupulous honesty about our past.

PETALUMA'S UPCOMING SUFFRAGE EXHIBIT



The **Petaluma Museum Association** is commemorating the centennial anniversary of the ratification of the **19th Amendment** by hosting a suffrage exhibit to be on display at the **Petaluma Historical Library & Museum** between August 26 and November 8. The exhibit will be dedicated to **Congresswoman Lynn Woolsey** and **Mayor Helen Putnam**, and the opening reception is scheduled for Wednesday, August 26.

Plans for the exhibit began in March 2019 when **Katherine J. Rinehart**, in her position as Manager of the Sonoma County History & Genealogy Library and as Chair of the Sonoma County Heritage Network, issued a clarion call to all Sonoma County historical institutions encouraging them to commemorate the **Suffrage Centennial**. Inspired by her message, **Paula Freund** reached out to Katherine, and, together as committed co-curators, they submitted an exhibit proposal to the PMA after discovering that Petaluma's suffrage history was indeed very rich.

One of the most significant finds was an 1886 reference in Elizabeth Cady Stanton, Susan B. Anthony, and Matilda Joslyn Gage's ***History of Woman's Suffrage*** to five Petalumans who formed a suffrage organization in 1869. Thanks to **John Sheehy's** research, these early pioneer suffragists will be featured in the exhibit. The leader of these five suffragists was **Abigail Goodwin Haskell**. Abigail's descendant, **Ann Nisson**, graciously offered insightful information about her great-great-grandmother and committed to loan valuable artifacts for the exhibit.

While searching at the California State Archives in Sacramento for the original copy of an 1870 suffrage petition signed by 424 Petalumans, a forgotten suffrage petition, created and signed exclusively by Petalumans in 1878, was uncovered. The analysis of these documents has provided valuable information and will be on display with portraits of many petition signers. Research also revealed that many prominent national suffrage leaders spoke in Petaluma between 1870 and 1911. They will be featured, and the story of their connection to the Petaluma community will be told.

The exhibit will also include artifacts loaned from the exceptional suffrage collection of San Franciscan, **Chase Livingston**, and a selection of postcards from the extensive collection of **Lauren Thor**.

Please note that although entrance to the PHL&M may be restricted, the exhibit will be on display digitally thanks to the generosity and skill of **Wayne Dunbar** and **Kaye Chandler**. Visit petalumamuseum.com or Facebook: @petalumamuseum for updates.

THE PMA'S 2020 SUFFRAGE CENTENNIAL EVENTS

August 26, Wednesday, “Women’s Equality Day” | 5 to 8 pm

Suffrage Exhibit Opening Reception

Dedicated to Congresswoman Lynn Woolsey & Mayor Helen Putnam

Acknowledgments bestowed by Mayor Teresa Barrett at 6 pm

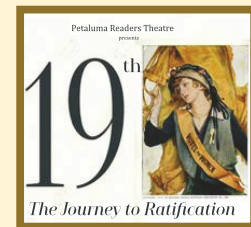
August 29, Saturday | 2 pm

“A Gallery Tour of Petaluma’s Suffrage Exhibit,” by curator **Paula Freund**

Sept 5 & 26, Oct 17, Saturdays | 7:30 pm

Sept 6 & 27, Oct 18, Sundays | 5:00 pm

Petaluma Readers Theatre brings you the voices of the women - and men - who shaped the movement including Petaluma’s own Abigail Goodwin Haskell.



Oct 1, 2, 3, Thur - Fri - Sat | 7 pm

Oct 4, Sun | 2 pm

50,000 Mice:
the Selina Solomons Story
by Jessica Litwak



A new play written and performed by **Jessica Litwak** honoring one of the great San Francisco suffragists.

October 14, Wednesday | 7 pm



“A Conversation Among Petaluman Suffragists,” performed by the **Petalumans of Yesteryear**

October 17, Saturday | 2 pm

“The Unsufferable Mr. Sanford, A Visit With California’s Powerful Politician Who Led the 1911 Fight Against Women’s Rights,” by Sonoma County historian **Jeff Elliott**

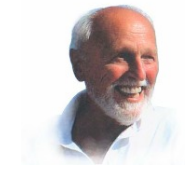


October 28, Wednesday | 7 pm



“Women’s Suffrage & Prohibition: The Good, the Bad & the Unintended,” by local historian **John Sheehy**

All events are free and will proceed as scheduled, but the presentation formats may change.
For updates visit petalumamuseum.com or Facebook: [@petalumamuseum](https://www.facebook.com/petalumamuseum)



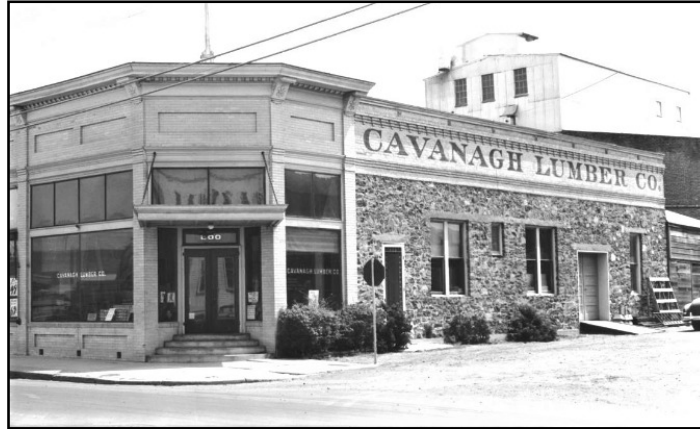
Petaluma History & Commentary

by Skip Sommer, Historian

THE CAVANAGHS OF PETALUMA

THE AMAZING CAVANAGH Clan of Petaluma helped shape our town for over four generations. Their unique story is one of pioneer gumption galore, and it all started in 1850, when the ambitious 26-year-old Irish immigrant John Cavanagh spent six grueling months at sea, sailing around the horn to San Francisco to get to the gold fields.

However, as most gold seekers had found by the end of 1850, the gold was either already staked-out or gone. It's not recorded how well John did in his efforts there, but he only spent six weeks in the mountains prior to coming to Sonoma County to buy a 160-acre ranch on the Russian River, near what is now the town of Windsor. But then, in 1857, John Cavanagh found out that Petaluma Creek had access to S.F. Bay and the sea for commerce, and he sold his river property (at a profit), and moved to Petaluma to acquire the rights to several mountain water springs and to found Petaluma's first Water Works, piping that valuable commodity 4.5 miles into the village. Schools and fire protection got free water, but homes, saloons, hotels and horse trough owners would pay for it.



*Cavanagh Lumber Co. Ca 1950's
Photo: Courtesy, The Sonoma County Library*

John Cavanagh was tough as well as ambitious, and in 1862 he was elected Petaluma's first City Marshall. The moniker "Marshall" was to stick with him for life and later, in 1866, he also became Petaluma's Justice of the Peace.

But 1867 was the banner year for the emerging Cavanagh clan, as John sold his piece of the Water Works to buy the property near the head of Petaluma Creek (now the Grocery Outlet Mall) and to open



1867 Stage Coach

his Cavanagh Lumber Company there.

One hundred bucks in 1867 would be worth \$1,748 today, and with those low digit numbers, Petaluma's professor Edward Lippett opened a school at 626 D Street, pioneer Tom Baylis organized our first library by donating 2,000 books, the city bought a horse-drawn pumper wagon

(see it in our Museum) for the fire laddies, and Morse & Woodworth were running a daily stage line for U.S. mail to Cloverdale, with stops in Santa Rosa, Healdsburg and Geyserville. Things were looking up!

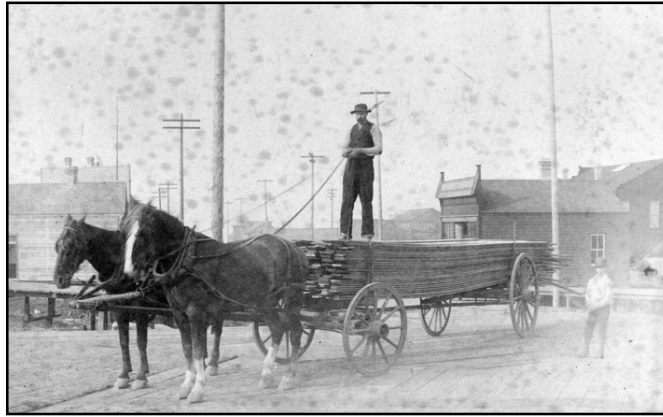
1867 was also a banner year for our country, then heading out of Civil War Reconstruction. Nebraska won statehood that year and the Alaska Purchase was also completed. African American men (only the men) won the right to vote and the first travelers trudged with their horses and wagons over the Chisholm Trail from Texas to Kansas. Bad news however, was the terrible virus yellow fever, which killed over 3,100 just in semi-tropical New Orleans alone.

Cavanagh Lumber was the first such in Petaluma and supplied most of the lumber for the homes, barns and, as poultry ranches had started to boom, hundreds of redwood chicken coops for miles around. It shipped

lumber down-creek to San Francisco, Sacramento and Oakland via shallow-draft scow schooner. The business was to stay within the family for four more generations and was a vital link in the building of our city.

In early years, the lumber was delivered by horse and wagon all over Sonoma County. One of those horses, named "Charley," became well known and loved by our whole community. At days-end, he would travel from the lumber yard to the Cavanagh home at #10 Keller Street without even being led, and for 20 years he was cherished by all. When Charley fell and died, many tears were shed here.

John had married Delia Carrigan in 1860 and they were to have 11 children, only seven of whom lived to maturity. One of those survivors was John Edward ("J.E."), who inherited the business in 1899 after "The Marshall" died. J.E. Married



1860's lumber wagon

Nellie Ingram and was uniquely known for his formality: always wearing starched white shirt collars and cuffs. Despite new competition from the Hopkins Lumber Company and occasional floods that floated hundreds of boards down creek, the business continued to thrive. As Petaluma grew, so did Cavanagh Lumber.

J.E. and Nellie lived in the 1902 Georgian Revival home on Keller Street. In 1913, a Craftsman-style cottage was added to the property

for fourth generation "Jack" and his wife, Viola Sartori. In later years, this became the Cavanagh Inn Bed & Breakfast, and is today commercial office space owned by Colleen Mahoney, (a descendant of another great early Petaluma family).

Cavanagh Lumber was a Petaluma landmark for over 100 years and Jack Cavanagh served an unprecedented

seven terms on our City Council. Cavanagh Park, Cavanagh Lane and Cavanagh Boys and Girls Club on Eighth Street are named for him. As a side note, this writer will always remember the help that Jack Cavanagh unselfishly afforded me, when I first moved to our town in 1975, to rehabilitate the old McNear Mill. Thanks, Jack. (I know you're reading this). ■



Help the museum and reduce your taxes!

Under the CARES Act, an eligible individual may take a qualified charitable contribution deduction of up to \$300 against their AGI in 2020. An eligible individual is any individual taxpayer who does not elect to itemize his or her deductions. A qualified charitable contribution is a charitable contribution (i) made in cash, (ii) for which a charitable contribution deduction is otherwise allowed, and (iii) that is made to certain publicly supported charities. The PMA is a qualified publicly supported charity.

Our Federal Tax ID is #94-2826729.

Please consult your tax advisor.



PETALUMANS OF YESTERYEAR JOIN THE PMA

by Linda Buffo

The members of the Petalumans of Yesteryear (POY) were overjoyed to become an official committee of the PMA. As such they will have a closer relationship with the board and continue to provide historic events through living history. A special thank you to Clint and the board for helping get this in place.

Marshall West transferred funds from the disbanded Petaluma Historical Society over to the PMA helping to build the PMA budget in the name of the POY.

This pandemic does not halt the passion of the POY to bring local history to life for our community and visitors.

Currently the group is working on providing support to the education committee by putting together a series of vignettes to be filmed in costume around town creating a virtual “Treasure Hunt” for school children.

The personas will be filmed in locations relevant to their life in Petaluma and the children will be challenged to find these “Treasure” spots throughout our historic downtown.

Along with the “Treasure Hunt,” the POY are also filming short snippets of their personas for the PMA Facebook page and working up a program around the suffrage movement in Petaluma. POY member K.C. Greaney has offered to do a spotlight as Benicia Vallejo to help children learn about the Mexican story in the Petaluma area.

Keeping history alive is the task while inspiring the love of history is the goal of this energetic group. Watch for them around town in costume at a safe distance.



HH&L Seeks Nominees for Preservation Awards

Do you know an historic Petaluma home that has received a well-executed restoration? It could be yours, a neighbor's or a just a house you drive by as you tool around town.

Heritage Homes & Landmarks of Petaluma seeks nominations for the 2020 Preservation Awards from the community at large. This committee presents awards for residential and commercial restoration projects which promote the preservation of Petaluma's unique architectural and historic heritage. HH&L also bestows awards for:

- new construction that is compatible with surrounding historic structures,
- craftsmen who demonstrate outstanding talent in the building industry,
- individuals who have made significant contributions to the cause of local preservation.

Nominations must be for work completed between July 2017 and June 2020, and will be accepted through July 30, 2020. Anyone may submit multiple nominations; please use a separate form for each nomination. To download the nomination form, please visit HH&L Preservation Awards. The direct link is: <https://www.petalumamuseum.com/calendar-event/2020-preservation-awards/> Mail entries to HH&L Preservation Award Entries, Petaluma Museum Association, 20 Fourth Street, Petaluma, CA 94952.

Winners will be announced in September 2020.

Museum Collection Update

Solange Russek
Museum Collections Manager

Thank you to Doreen Schneider who donated photos of the inside of Earle Bond's home located on the second floor of the historic Mutual Relief building at 25 Western and Fourth Street. Earle Bond, beloved musician and artist had many friends that gave him the lavish furniture to decorate his home. Doreen was an early member of Heritage Homes.

These newspaper clips are excerpts from an article written by Bill Soberantes after Earle's passing and appeared in the Petaluma Argus-Courier on December 10, 1989.

My Fascinating World of People

Earle's parties were held in his mansion on Keller Street. After selling the mansion, he built a fantastic studio in the third story of the Mutual Relief Building that stands at the corner of Kentucky Street and Western Avenue.

Earle continued his parties at his third-story penthouse studio, and the best dressed people and sometimes not so well dressed individuals attended these social events.

I'll never forget attending one of Earle's parties aboard the Lurline. This shipboard party was given just before Earle made one of his many voyages to the Hawaiian Islands.

At the time the Lurline was the cruise ship that movie stars and even members of the high society set of the time cruised on.

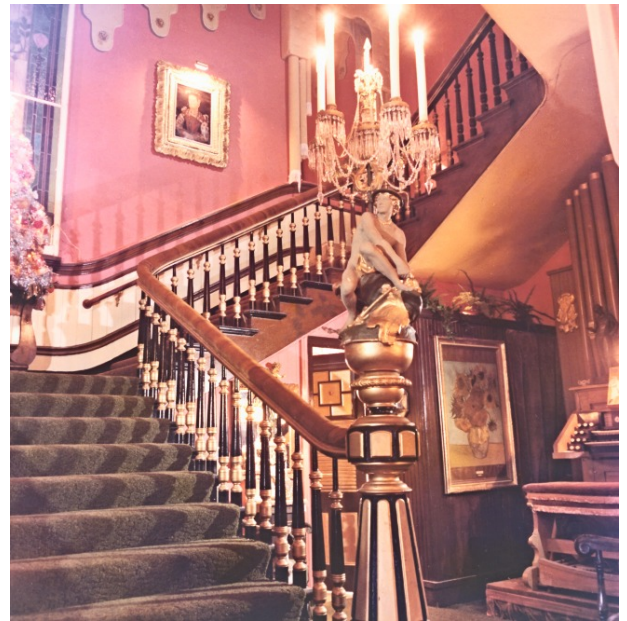
Earle's party aboard the Lurline drew so many people that some of them had to adjourn to the upper deck. When the ship sailed, some of his guests were still aboard. I was one of the guests and we had to take the pilot boat back.

During his years at the Green Mill and Sonoma Joe's, Earle played for a number of generations of Petalumans, and a big percentage of them were his personal friends. He was the spark that made the Redwood Room of the Hotel Petaluma the entertainment palace of Petaluma.

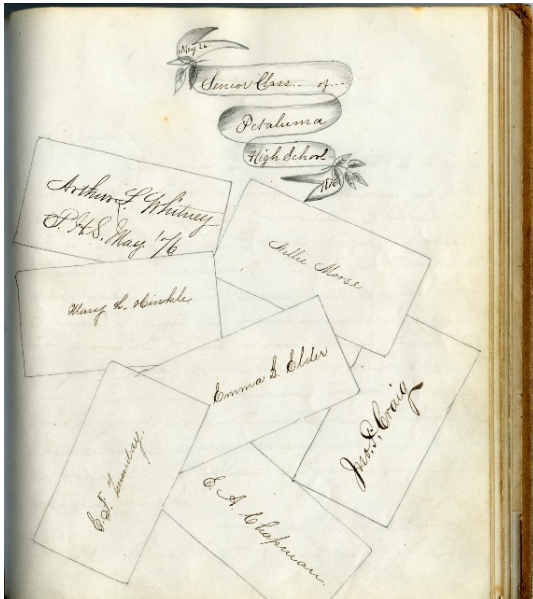
He played for weddings, funerals, and many of his Saturday night nightclub engagements were followed by playing the organ in local churches.

There were those who called him the Earle of Bond, The Earle of Petaluma. To a multitude of people he was an angel because he was there to give them a helping hand when they were down on their luck.

Ray Wilson expressed the feelings of hundreds of people when he said, "Petaluma will never be the same without Earle Bond."



**From PMA Collections:
Clara Belle Sproul's 1876-1877
Petaluma High School Autograph Book**



The PMA thanks Sue Canavan for her 2015 donation of Clara Belle Sproul's journals from 1914 to 1939. Clara Belle's accounts are used by the Petalumans of Yesteryear for their living history program. Click on this link to read more about Clara Belle, "The Princess of Petaluma," by Michael Slade, pg. 9.

<https://www.petalumamuseum.com/wp-content/uploads/2018/05/2016-Spring-Summer-PMA-Newsletter-for-the-web.pdf>

Clara Belle Sproul and her classmates were the children of Petaluma's original pioneer families. Many of them became involved in Petaluma businesses and married into other pioneer families, becoming leading members of the community. Here are some of the well-known Petaluma names that appear in Clara Belle's yearbook.

Arthur Whitney, (born May 26, 1857 died in 1914), son of Albion Whitney, was a Petaluma merchant and then state senator. Arthur married Anna St. John in November 1882; they resided at 3116 Washington Street, San Francisco, CA. Here is an excerpt from the San Jose Mercury News about Arthur by Michael Svanevik and Shirley Burgett (published April 12, 2017; updated May 11, 2017): "Commercial production along the Peninsula began as early as the 1890s. In 1895, brothers C.E. and Arthur L. Whitney (a graduate of the University of California) settled in San Mateo. Christian de Guigné and John Stauffer, owners of the Stauffer Chemical Co. and big users of salt, were company directors. The firm garnered an empire of 3,000 acres, mainly marshland, on the east side of the railroad tracks. Their world extended to the north from Nineteenth Avenue, where they began the process of building evaporation ponds. Soon referred to as the Salt King, Arthur Whitney assumed control of the company in 1902. He worked with his three sons: Merrill, St. John and Leslie. Their headquarters, also in San Mateo, included a train stop at what they called Leslie Station. Years later, Leslie Station was designated Hayward Park."

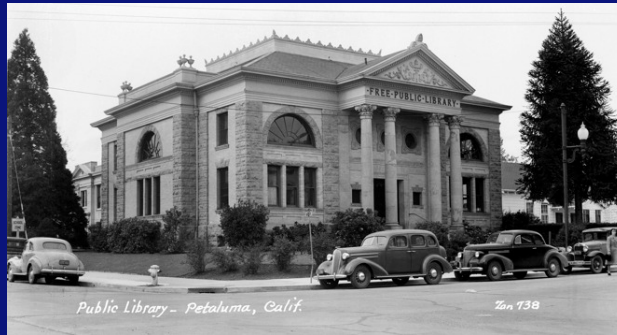
Research and write-up of names below is credited to Katherine Rinehart, historian.

Frank Denman was the son of Ezekiel Denman and brother to Ida Belle Denman, who married George Plummer McNear. Frank, in certain terms, was "shoved" into the banking business by his father, who was a banking pioneer. Frank studied as an engineer/surveyor and graduated from the University of California in 1877, then worked as a county surveyor from 1881-1886. You can read more on Frank on newspapers.com (Santa Rosa Republican; Tuesday, March 9, 1948, page 16).

Nellie Denman, sister to Frank and Ida Belle Denman, graduated from Mills Seminary (now known as Mills College) in 1874. She was Ezekiel Denman's daughter from his first wife, Nancy Hardenbergh Denman, and Isabel Denman's step-daughter. Nellie never married.

Frank M. Towne (1859-1919) was the son of Smith and Amanda Towne. His siblings were Lester B. (1861-1904), Charles, Florence, Walter (1868-1932, a druggist and photographer), Clarice and Beverly (dates unknown). Photos and printed cards of Petaluma marked "Photo by Towne" were produced by Frank's son Walter Towne, aka Towne the Druggist, circa 1905-13. He ran the drugstore at 155 Main Street from about 1898 to 1913. This was the same drug business operated by his father, Smith D. Towne, since 1858. In January 1913, Towne moved his drug business to 171 Main (south end of the Derby Block, at the southwest corner at Washington), formerly the Maynard/Blackburn drugstores. Towne converted the 155 Main location to The Candy Shop which he operated until September 1915. The 171 Main store was sold to druggist Louis James in July 1920 when Towne retired to pursue fruit farming. (See page 117 of Adair Heig's 1982 book *History of Petaluma: a California River Town* for a photo that shows Towne's stores at 155 and 171 Main Street, circa 1914.)

Learn more about the individuals listed at <https://www.petalumapioneers.org/> created by Paula Freund for the "Portraits of Petaluma Pioneers" exhibit of 2017.



Alexander J. "Zan" Stark (1889-1967)
 "Public Library - Petaluma Calif."
 Real photo postcard #738, March 1941

You have made the Petaluma Museum a part of your life.
 Now, we hope you will consider making the Petaluma
 Museum Association a part of your lasting legacy by leaving
 a gift in your will or trust.

Your bequest will ensure that the PMA remains a vibrant organization
 that welcomes our community in the historic Carnegie Library Building
 and passes down our history to the next generation of Petalumans.
 To make the PMA a part of your estate plans, contact your financial
 planner. To find out more about how your will or trust might sustain our
 educational mission, contact Clint Gilbert, PMA Board President, at
clint@petalumamuseum.com

A w a r d e d G r a n t s

California Revealed: "Our Collections-Our Communities" \$3800

This will allow us to update the upstairs poultry exhibit/displays. We will connect with the oral histories now posted on California Revealed. Please see some of the oral histories and audio interviews with this link! <https://calisphere.org/collections/26453/>

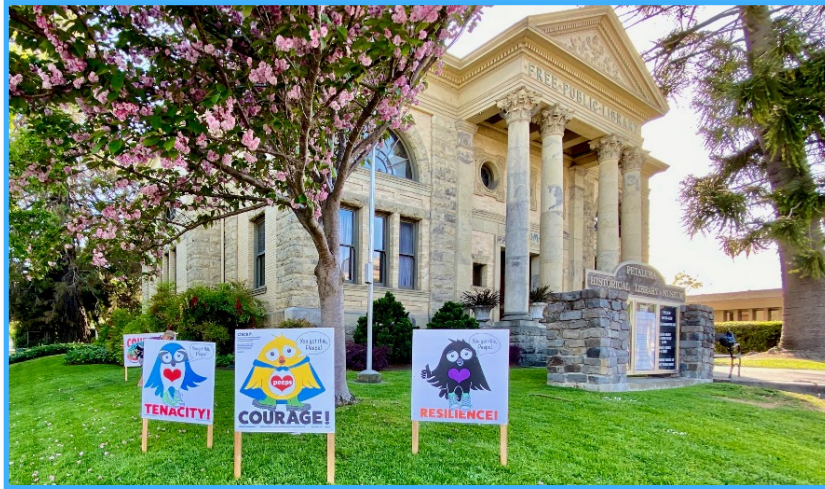
California Revealed: Cataloged Assistance Award: \$3900, The Merton Doss Collection

Merton Doss, a Petaluma native, photographed all aspects of Petaluma social and architectural history from 1969 until his death in 2009. The 1102 slides were donated to the Petaluma History Library Museum in 2011 where they have been in non-archival storage sheets and boxes since. We will be digitizing and preserving the slides.

Sonoma County Community Grant: \$2500

This will allow us to digitize the McNear Collection that has grown to over 1000 items! The collection ranges from letters and early Petaluma and Marin photographs dating from the 1850s to the 1900s. The letters will be digitized and stored in archival sleeves and boxes. An early Petaluma Banking exhibit will be developed from this collection. John Augustus McNear, Ezekiel Denman, and Isaac Wickersham to name a few, were banking pioneers of Petaluma and Sonoma County.

We thank both California Revealed and Sonoma County Supervisors for continual support for preserving Petaluma's precious history!



Public Art Project on the Museum Lawn

by Rayne Madison

The inspirational signs on the museum lawn are a combination of two public art projects, the Petaluma Art Chicks and Superhero Unfolding. Created by a local artist, with enthusiastic support from the Petaluma Historical Library and Museum, the projects share a common goal: to bolster the human spirit and promote smiles around town!

Petaluma Art Chicks

The Petaluma Art Chicks made their official debut on the Museum lawn on Saturday, April 28, 2020, the original date of the 2020 Butter & Eggs Days parade. Created as a response to the COVID-19 crisis and shelter-in-place, they were a simple creative way of bringing joy, levity and support to the community during frightening and uncertain times.

Chick P. is the original “Art Chick,” and a cross-over character to the Superhero Unfolding project. He is Petaluma’s first completely unofficial, unsanctioned, unconventional and unstoppable Superhero!

Chick P. is an amalgamation of Petaluma's agricultural past; the tenacity, strength and courage of a vulnerable chick entering an unknown world; and everyone's love for emojis. Chick P. is sweet, affectionate, perky, enthusiastic and undeterred. Qualities that can come in quite handy during a crisis.

Every bird in the series, stands on a word representing an aspect of their personality, which reflects a human quality or attribute. Chick P. is courageous, Scrub J. is tenacious, Rave N. is resilient and Swall O. is kind. Their common message, "You got this, Peeps! carries dual meaning.

Superhero Unfolding

Superhero Unfolding (SU) is a heart project of the artist, which emerged in 2016, while she was being treated for breast cancer. The concept underlying the project is that inside of each and every human being lies a superhero ready to awaken, ready to unfold.

A series of public art events for SU were in development at the onset of the COVID-19 crisis. All events have been cancelled. Construction is also halted on the “Superhero Unfolding Inspiration Station,” an interactive pop-up public art installation, scheduled to launch at the Museum this spring. Funded in part with a grant from Creative Sonoma, the Inspiration Station was scheduled to make several appearances in Sonoma county.

With SIP in place, the Superhero Unfolding project has focused on developing its website to support budding superheroes. The site provides resources, activities, and sources of inspiration, including a daily quote blog. There are also opportunities to participate in the project online and to submit an original personally-created superhero drawing to its online gallery.

To find out more about the Petaluma Art Chicks or the Superhero Unfolding project you can contact the artist, Rayne Madison (aka SweetFrau) through one of her websites:

www.SuperheroUnfolding.online

www.SweetFrau.online

The artist would like to express her appreciation for the support she has received from the Museum, the City of Petaluma and the community in making this work possible. Thank you, ALL!

Membership

Dear Members:

We began as a membership organization with the mission “To preserve the unique history of Petaluma and to provide educational and cultural services to the Community”. Your membership is critical at this time as we find our way through this transition to a safer museum and a safer research library.

We hope to reopen soon but in the meantime it’s important that you renew your membership. Without access to our office we are not able to send our regular renewal reminders so please check your membership type and expiration date on your membership card.

As a courtesy, the PMA is extending all memberships by three months. Please pay your membership as soon as you are notified and we will add three months to the end of your term. You can also renew online by going to <https://www.petalumamuseum.com/join/> and scrolling down to find your membership type. Please consider upgrading your membership level if you can afford to do so.

Your new membership cards will be mailed once the City lifts the seal on the building and we are allowed to return.

In this newsletter we are only able to list donations and memberships that we have received either through the mail or online during the closure. As soon as we have access to the office records we will be able to list the quarterly renewals and donations that came in prior to closure on March 17.

Thank you for your support!

Memberships Renewals:

Marilyn Gambonini

Marillyn Maslin

Corienne Schuster

Brian Gilmore

Kendra Murray

Laverne Stout

Evelyn Gurevitch

Tonya Parnak

Salvatore Taormina

Donations:

Angela Ryan

Karl Bundesen / in memory of Herb & Barbara Bundesen

Laverne Stout

Thank you for donating to Kathy Barron-Fries Birthday Fundraiser for the Petaluma Museum

Rebecca Bown

Teri Taketa-Graham

Tim & Debi Riddle

Robin Anderson-Bowen

Kathleen Hawker

Geraldine Sbragia

Laura Castillo

Pam Hoberg

Patti Schwessinger-Hanson

Elizabeth Clary

Harry Nieuwboer

Francesca Smith

Debbie Countouriotis

Bill & Katherine Rinehart



Kenneth J. Nugent, CFP®
 Portfolio Manager/Account Vice President Wealth Management

UBS Financial Services Inc.
 555 California Street, Suite 3400
 San Francisco, CA 94104
 Tel. 415-954-5911, Fax 855-291-9487
 Toll Free 888-283-7103
 kenneth.nugent@ubs.com
<http://financialservicesinc.ubs.com/fa/kennethnugent/>

UBS Financial Services Inc. is a subsidiary of UBS AG. www.ubs.com

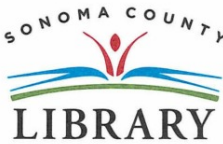


Linda Buffo
 REALTOR®, SRES
 Your Trusted Partner in Real Estate
 CalBRE 01331391



BUNDESEN
 616 Petaluma Boulevard South
 Petaluma, CA 94952
Mobile 707.696.9368
 Office 707.769.9000
 Fax 707.762.1032
 Email linda.buffo@bundesen.com
 Website LindaBuffo.com

Each office is independently owned and operated



Katherine J. Rinehart, M.A.
 Manager
 History & Genealogy Library

(707) 308-3228

211 E Street
 Santa Rosa, CA 95404
krinehart@sonomalibrary.org

www.sonomalibrary.org

DISCOVER • LEARN • SHARE

Catherine Edmondson **Tina Hittenberger**
 Realtor® Broker Associate | MBA
 DRE 01995911 DRE 01397821
 707.479.3875 707.738.5607
cathy.edmondson@compass.com tina.hittenberger@compass.com

Compass Founding Team Agents
 11 5th St. Suite #202, Petaluma, CA 94952

America's Yesteryears
 Exhibits, Research, Educational

Don Siemens
 Historic & Clinical Ecology

P.O. Box 248
 Bodega Bay (707) 364-1643
 CA, 94923 Dosiem@comcast.net

Wayne Dunbar


(707) 773-9000
 159 Kentucky Street, Ste. 2
 Petaluma, CA 94952

wayne@aftertec.com
www.aftertecai.com

aftertec advanced imaging



Kit Lofroos, MA LMT^{NM} | CMT^{CA}



(707) 931-8212
by appointment

lofroos.org
 State of NM License #2061 | State of CA Certification #14321

deeper... integrative... essential



STEVEN J. LAFRANCHI & ASSOCIATES, INC.
 CIVIL ENGINEERS - LAND SURVEYORS - LAND PLANNERS

STEVEN J. LAFRANCHI, P.E., P.L.S.
 PRESIDENT

PETALUMA THEATRE SQUARE
 140 SECOND STREET • SUITE 312 • PETALUMA, CA 94952
 TEL 707-762-3122 FAX 707-762-3239
steve@sjla.com



McNEAR'S
 RESTAURANT
 & MYSTIC THEATER

23 Petaluma Blvd. N.,
 Petaluma, CA 94952
 Office: (707) 765-9211
 Fax: (707) 765-4671
www.mcnears.com
www.mystictheatre.com

Kenneth O'Donnell
 Owner/Booking
 Cell: 707-338-8669
ken.mcnears@gmail.com



SUMMIT
 STATE BANK




DEXTER HOWARD EVENTS
Christina Dumlao
 Co-Founder & President
 christina@dexterhowardevents.com
 www.dexterhowardevents.com
 707-774-6363 office
 707-694-8917 mobile

Distinctive Events & Global Adventures

Christine Bennett, MA

Cleantech Communication, Inc.
 1290 Marian Way
 Petaluma, CA 94954
 christine@cleantechcommunication.com

+1 925. 330. 4783

Elder Financial Protection Network
Ruth W. Robeson, Esq.
Executive Director

17 Keller Street, Suite A
 Petaluma, CA 94952
 707.981.8403

ruth@efprotection.org
 www.efprotection.org

SMT | SPAULDING
 MCCULLOUGH
 & TANSIL LLP

WARREN L. DRANIT
 ATTORNEY AT LAW

90 South E Street Suite 200
 Santa Rosa CA 95404

Tel 707 524 1900 Santa Rosa
 Tel 707 283 0000 Petaluma
 dranit@smlaw.com

11 Western Avenue
 Petaluma CA 94952
 www.smlaw.com

Musical Mondays at the Museum
Join Kayleen Asbo, Ph.D for
"Conversations Across the Centuries"
10:30 am-12:00pm
Petaluma Historical Library and Museum
Concerts, classes and lectures that will change
the way you experience classic music
www.kayleenasbo.com

O: (707) .763 .5475
 F: (707) .778 .8417
 E: info@Wedgeroofing.com

WEDGE
 ROOFING
est. 1961

5 Casa Grande Road, Petaluma, CA, 94954 Insured PL & PD Wedgeroofing.com

CLINT GILBERT
LIGHTING DESIGN

510-644-2701
 CLINTBELOVE@GMAIL.COM
 LOVEOFLIGHT.NET

*Make your next event
 SPECIAL!*

CONSULTATION • DESIGN

**Become a Business Sponsor,
 Company Sponsor or
 Corporate Sponsor and
 enjoy the many benefits at
 those membership levels**

Business Sponsors will have their cards appear in the newsletter four times a year.
 Company or Corporate Sponsors will have their logo appear in the newsletter four times a year.

Join online at <https://www.petalumamuseum.com/join/>



MEMBERSHIP BENEFITS & CATEGORIES

BASIC BENEFITS OF ALL MEMBERSHIP CATEGORIES:

- Discounted admission to temporary exhibits (admission to the library & permanent exhibits is free to all)
- Reserved seating at the Butter & Egg Parade
- Subscription to and acknowledgement in the **PMA** newsletter
- Personalized membership card
- 10% off Museum store merchandise
- 10% off gift memberships
- Invitations to previews & receptions

INDIVIDUAL \$35

All Basic Benefits
(\$20 memberships are available in this category to: Seniors, Educators, Students. Military is free)

FAMILY / DUAL \$70

All Basic Benefits, PLUS:
•Extension of Basic Benefits to an additional adult & children in the same household up to age 17
•Two personalized membership cards

RECIPROCAL MUSEUM MEMBERSHIP PRIVILEGES - "Museum Goer" Benefit

If you join the **PMA** at the Supporter level (\$125) or higher, you will receive free or discounted admission to more than 600 museums in the U.S. Some of the top Bay Area participating museums are:

Asian Art Museum • Walt Disney Family Museum • de Young Museum • Legion of Honor
CA Historical Society Museum • Charles M. Schulz Museum • Sonoma County Museum

SUPPORTER \$125

All Family / Dual Benefits, PLUS:
•**Reciprocal Museum Membership Privileges**

BUSINESS SPONSOR \$150

All Supporter Benefits, PLUS:
•Your business card in the **PMA** newsletter

PATRON \$400

All Supporter Benefits, PLUS:
•Personalized exhibit tour for you and 10 guests
•Listing of your name on the Museum's Donor Wall

COMPANY SPONSOR \$500

All Patron Benefits, PLUS:
•Your company logo in the **PMA** newsletter

BENEFACTOR \$750 +

All Patron Benefits, PLUS:
•Opportunity to be named the benefactor of a temporary exhibit or annual program

CORPORATE SPONSOR \$1,000 +

All Benefactor Benefits, PLUS:
•Your corporation's logo in the **PMA** newsletter

..... Please detach and return the portion below with your payment method.

YES! I want to join the PMA at the level of:

Name: _____
Address: _____
City/State: _____
Zip: _____ Phone: _____
Email: _____

Payment Options:

Enclosed is my check made payable to the
Petaluma Museum Association

Charge \$ _____ to my
Visa MasterCard

Card #: _____

Expiration: ____ / ____ 3-digit code: _____

Signature: _____

All membership dues are valid for one year beginning the month of enrollment and are tax deductible as provided by law.

If you prefer, you can join online at petalumamuseum.com, or call 707-778-4398

Petaluma Museum Association
Petaluma Historical Library & Museum
20 Fourth Street
Petaluma, CA 94952-3004