

Petaluma Museum Association

Petaluma Historical Library & Museum

Preserving the Unique History of Petaluma and Providing
Educational and Cultural Services to the Community

Quarterly Newsletter
Special Digital Edition

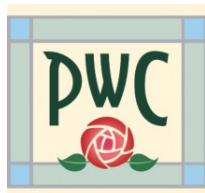


Finding Our Roots: Women of Petaluma Flourishing & Blooming Over the Years

Spring 2022

Volume 32, Issue 1

On the Cover



*Upcoming Exhibit
Opening April 8*



Finding Our Roots: Women of Petaluma Flourishing & Blooming Over the Years

Toward the end of the Victorian era, women wanted a greater voice in their communities. Throughout the country, Women's Clubs began to form in the late 1800s. As early as 1895, some local teachers began the Ladies Literary Society, electing Ida Belle McNear president. The next year the Woman's Club of Petaluma was formed with Mrs. McNear as president and many groups were brought into the club, including the Literary and Choral Societies. These women were devoted to different areas of study for self-improvement education.

At about the same time, the 1893 Chicago World's Fair sparked city beautification movements across the nation. In 1896, Addie Atwater formed the Ladies Improvement Club of Petaluma, which was credited with work at both Walnut Park and what is now Penry Park. As Addie said in her letter to William Randolph Hearst of The San Francisco Examiner on March 8, 1899, "This club was organized in June 1896, because of the deplorable condition of the city's public squares and streets, and the inexcusable neglect of the men to put and keep them in decent condition."

The Petaluma Garden Club, formed in 1924 under the leadership of Ray Herman and with the assistance of two members of the Petaluma Woman's Club, initially began a campaign focused on city beautification and home gardening. The club suspended activities during WW II, and Martha Philips of the Woman's Club was credited with founding the Petaluma Victory Garden Club that reorganized again as the Petaluma Garden Club after the war ended.

Today, these vibrant organizations continue to promote community involvement. Their broadening sense of commitment welcomes new members. Visit the exhibit to see the depth of history, range of activities, diversity of projects and richness of programs enjoyed by both clubs. Connie Mahoney and May Tomasetti were presidents of both clubs, and third and fourth generations of their families are members today. Come look for friends and neighbors at the exhibit! Private tours may be arranged. Watch for news on the museum website of events and activities offered throughout the exhibit.

***Identification of the women on the cover can be found on page 4**

The PMA plans to present the exhibit to the public in person, if certain COVID-19 restrictions are lifted. If restrictions mandate that we keep our doors shut, the PMA will eventually offer a video of the exhibit on the PMA website. For updates on the exhibit and how long it will run, please visit petalumamuseum.com

Petaluma Museum Association Board

Executive Officers:

President: Debbie Countouriotis
Vice President: TBD
Treasurer: Erica Barlas, CPA
Recording Secretary: Kit Schlich

Directors:

Jenny Belway
Cynthia Berthram
Kathy Fries
Clint Gilbert
Rob Girolo
KC Greaney
Kate Hawker
Elece Hempel
Megan Kelly
Ernest Ongaro
Angela Ryan
Elizabeth Walter

Parks & Recreation Dept.

Kevin Hays

Recreation Music & Parks Commission

Mary Kate DeLucco

Historic and Cultural Preservation Committee

Alice van Ommeren, Representative

Youth Advisory Member

Quin Winter

Staff:

Liz Cohee, **Museum Coordinator**
Mary Rowe, **Membership &
Newsletter Editor**
Solange Russek, **Collections Manager**

The Petaluma Museum Association Newsletter is published quarterly and distributed to its members.

Thank you to all the contributors and special thanks to Kit Schlich, copy editor. If you would like to contribute any news or items of interest to our newsletter, you can email

mary@petalumamuseum.com

Deadline for submission is April 1, 2022

Petaluma Museum Association
20 Fourth St.
Petaluma, CA 94952

Message from the President

Debbie Countouriotis

“A visit to a museum is a search for beauty, truth, and meaning in our lives. Go to museums as often as you can.”

— Maira Kalman

While trying to find a starting point for my letter I came across the above quote, which I truly love, and thought how ironic it was, as once again, we were temporarily closed due to the uptick in virus cases. However, keeping positive thoughts and believing that we will overcome this is what I am going to do. We will carry on and fulfill our mission of *Preserving the Unique History of Petaluma and Providing Educational and Cultural Services to the Community*; whether in person or digitally, it will happen. So, as the quote above says:

Go to museums as often as you can.
(Even if it's digitally!)

I'd like to wish you all a Happy New Year! And while I should be writing about our wonderful and exciting New Year's Eve concert, encouraging you to stop in and view the Black History Month exhibit and enjoy a jazz concert, unfortunately, due to events beyond our control, these had to be cancelled. Not to despair, though, we have a R & B and Gospel concert scheduled for Feb. 27 in honor of Black History Month. To find out all the details and to purchase tickets go to petalumamuseum.com/events/. We are also diligently working on a make-up date for our New Year's Eve concert.

Featured Video and Upcoming Events

This month our featured video describes the inspiration which brought John Augustus McNear to Petaluma and how the McNear business enterprises helped fuel the economic boom for Sonoma and Marin Counties. The project was funded by the “East Coast McNears” who wanted to know more about their West Coast relatives. (It's currently available to view on our website.)

Butter & Egg Days Parade April 23, 2022

This year, the City of Petaluma will once again hold its annual Butter & Egg Days Parade. On Saturday, April 16, 2022, the museum will host the Petaluma Downtown Association's annual kickoff opening celebration of Butter & Egg Days: the Good Egg Award.

Petaluma Celebrates National Historic Preservation Month, May 2022

The PMA will be a co-sponsor of National Historic Preservation Month and will list many exciting activities and places to go on our website. Stay tuned for more information.

Upcoming Exhibits

We are in the process of getting the joint Petaluma Woman's Club and Petaluma Garden Club Exhibit, a Railroad Exhibit and Main Street Petaluma Exhibit ready for you. All are in the works and whether they go live in-person or digitally, we will move forward with hosting them. Please check our website often for updates and upcoming news.

PMA Board Call for Candidates 2022

The PMA is looking for potential candidates to join our board. Find out more elsewhere in our newsletter.

In Closing

Thank you to all those members who gave to our annual appeal drive. The generosity of our membership is beyond what we anticipated and please know that your donation will be put to excellent use. If you still haven't donated, it's never too late! You can donate online, by mail or with a phone call to the office. Remember, your donation is tax deductible.

Collage of Portraits: Identification



Prominent in the center of the collage is Addie Atwater, president of the Ladies Improvement Club of Petaluma. Moving clockwise from the top left is Susan Coolidge, past president of PGC (Petaluma Garden Club), next is a group photo: Seated is Mahtee Olmsted, at a Petaluma Woman's Club meeting the day she was installed as president in 1944, with a row of past presidents behind her. They are, from left, Mrs. G.P. McNear, California Healy, Mrs. J. W. Hamilton, Mrs. W.L. Sales, Mrs. A.L. Phillips, Mrs. J.J. Bergstedt, Mrs. George Armbruster, Mrs. Frank Denman, Mrs. James Crase, Mrs. Joseph Tuttle and Mrs. Arthur Ellis. Continuing clockwise is Connie Hammerman, past president of PGC and PWC (Petaluma Woman's Club), group photo of current club presidents starting from left Suzanne Clarke, PGC, Sue Bunker, Colleen Mahoney, co-presidents, PWC. Continuing clockwise is Connie Mahoney, past president of both PWC and PGC, black-and-white photo of unidentified woman from the Petaluma Woman's Club, next is Connie Mahoney and Louise Benanti (Louise with arm around Connie) Louise was also a past president of both PWC and PGC, May Tomasetti (Rebuilding Together flowers) past president of both clubs.

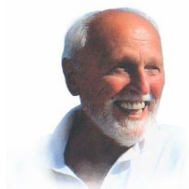
PMA Seeks Candidates for Board of Directors

The Petaluma Museum Association, dedicated to preserving and celebrating Petaluma's history, seeks qualified candidates for its board of directors for a two-year term starting July 2022. Directors are expected to advance the financial stability, organizational strength, and cultural relevance of the PMA through active attendance at board and committee meetings, PMA events and by acting as PMA representatives in their other community activities.

The PMA is looking for potential board members with experience in:

- finance (we need a treasurer)
- legal expertise
- fundraising
- grant writing
- public relations and community outreach
- marketing and retail merchandising
- event and exhibit planning
- community-wide education
- technical expertise (website, video editing, etc.)
- a passion for Petaluma history

Deadline for applicants is March 15, 2022. Download an application from the PMA website at www.petalumamuseum.com.



Petaluma History & Commentary

by Skip Sommer, Historian

WHEN CALIFORNIA VOTED 'THIRD PARTY' IN 1912

ONE-HUNDRED-AND-TEN YEARS AGO, President Theodore Roosevelt became irked at his snubbing by the Republican National Committee, which had gone for the incumbent, William Howard Taft. So "TR" bolted from the G.O.P. and formed a third party, The Bull Moose Progressives. California (led by Petaluma and the Bay Area), voted for Teddy in the closest electoral vote in state history. Out of 677,944 total California votes, Roosevelt beat Woodrow Wilson by just 174 votes! Not only was Teddy very popular here, but his running mate, Hiram Johnson, was Governor of California then.

However, Democrat Woodrow Wilson went on to sweep forty states and win big because of the split Republican ticket. He took an amazing 435 electoral votes (as compared to Joe Biden's winning electoral count of 306 in 2020), and he also got control of Congress. It was then said, "America was changed forever." Both Wilson and Roosevelt were, in the year 2000, named two of the Top Ten American Presidents list by U.S. historians. Conservative Republican Taft, who finished third that year, is not mentioned.

In Sonoma County, 1912, a lady named Jennie Colvin became the first woman ever to vote here, seven years prior to our country allowing women's suffrage at the national level. In that same election, most of the Sonoma County's districts supported prohibition of alcohol, but NOT Petaluma, with its many saloons and vintners.



Roosevelt campaigning in 1912

Our Sonoma County Sheriff testified he had seen too many "women get happy through booze" and (he stated) it was "demoralizing." That was a double-big "No-No" then because women were not even allowed to enter saloons at that time.

So, our West County went "dry" in 1912. Here is an interesting example of "women getting happy" in 1912: The Curtiss Publishing Company's San Francisco office "fired 15 young women for dancing the Turkey Trot, during lunch break." (Tsk, tsk.)

Prior to the election of 1912, President Taft had signed a resolution making New Mexico the

47th state in the Union. New Mexico had been a territory since 1850, and its boundaries had been established in 1863. The snag that had kept it in limbo for 62 years had been the argument over whether it should be admitted as a "slave state" or "non-slave state." (Hard to believe, that issue lasted until 1912).

1912 was a newsworthy year world-wide, as the "unsinkable" liner Titanic, on its maiden voyage from England, did indeed sink, after hitting an iceberg in the North Atlantic Ocean. More than 1,500 lives were lost and that event dominated the news for decades. The 1912 Summer Olympics in Sweden also made big news, with Native American Jim Thorpe winning both the decathlon and the pentathlon. Eighty years later, in 2000, Thorpe was named the U.S.'s "Greatest Athlete of the Twentieth Century." And then, this news item: In a portent of times to come, American Marines landed in Cuba, at a place called . . . Guantanamo Bay, a location still prominent in the news of today.



Jim Thorpe—1912 Olympics

In Petaluma, California, much was also afoot in 1912. The Petaluma Daily Courier was reporting that at the Hill Opera House, one could see “for the first time in this city, motion pictures in color!” That film was about the coronation of England’s King George V, and it was promised that “not only motion, but color is obtained.” Our library (now Museum), on the corner of Kentucky and B Streets, was just six years old then, and very popular.

On Jan. 31st, Petaluma industrialist John McNear Sr., announced the grand opening of his new Mystic Theater in his McNear Building on Main Street (now still the Mystic Theater), and our Mayor (carriage maker) William Zartman, exclaimed that it was “the prettiest vaudeville house in California.” John McNear Jr. was going to manage the theater and promised “the house will book all of the good clean attractions and censored pictures.” The first act to be booked was “Van & Livingston and their nonsensical novelties.”

John McNear’s other son was George Plummer McNear (or “G.P.” as he became known). The McNears were wildly successful in Northern California and their many excellent endeavors are legend here in Petaluma. However, in the spring of 1912, they made a doozy of a miscalculation. John McNear announced he would begin construction of his American Livery Stable, claiming, “This monster stable will have 100 stalls and four corrals plus four buggy whip and robe rooms.” He noted then, that several of the “old Chinese houses” (our local Chinatown then) would have to be removed to make room for the new stable, at the corner of C and Third Streets.

Had Mr. McNear overlooked the looming advent of the automobile? Well, in that very same issue of the Petaluma Argus it was announced that “The Winton Roadster, ordered by Robert Steitz, arrived here on the



*Automobile in front of the Peters home in Petaluma ca 1912.
courtesy of Sonoma County Library*

Steamer Gold, and it has all the latest improvements and is even equipped with a self-starting device.” (It apparently didn’t need one of those McNear buggy whips.) Also arriving on Steamer Gold that same day was the “Elegant Stearns five-passenger auto, equipped with a silent engine.” Even Schluckebier Hardware Store on B Street (now Rex-Ace Hardware) was keeping up with the times, advertising the Flanders “4” Motorcycle w/magneto, for only \$175! (It was said to be “pretty swell looking.” too).



Patent toilet

Our Petaluma fire department was lobbying the City Council that same spring to buy a “motor-propelled fire apparatus,” which was a “combined chemical, auto, pump and hose wagon.” It seems that the trend AWAY from the horse was boldly afoot here. However, just to be cautious, our Council passed an ordinance that regulated all Petaluma alleys to be one-way, with entrances “only from the north ends” because too many of the horse-drawn wagons attempted turn-around back-ups, blocking said alleys.

And, in the wonderful world of 1912 real estate, Petaluma’s J.W. Horn Company was offering “Three acres, in city limits, overlooking the valley, w/a nearly new four-room cottage with bath, patent toilet, hot and cold water and ample poultry buildings.” \$3,500 w/ only \$1,000 cash. Now of course you know I would comment here that “the patent toilet” appeared to be a real whiz of a feature! In comparison, real estate today seems so, well, mundane. (Except for the incredible prices).

Museum Collection Update

Solange Russek
PMA Collections Manager

The Eggery

Thanks to Norma Giddings for her donation of ephemera from her family's restaurant the "The Eggery".

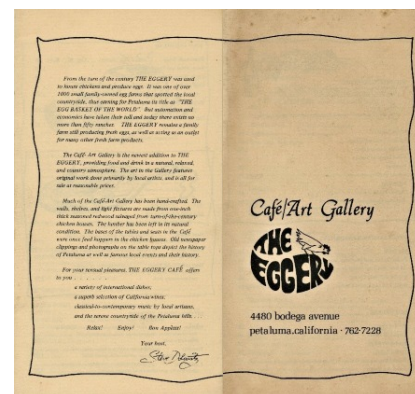
Norma's folks, Marvin & Elain Dolowitz came to Petaluma in 1949 from New York. Struggling over the prices of eggs and feed, they decided to convert and open "The Eggery" restaurant at 4480 Bodega Highway in 1969. They had entertainment with belly dancing and performances by Kate Bush and Norman Greenbaum.



Marvin Dolowitz on tractor



The Eggery by Lew Barber



Menu



1973 sponsorship of Little League



Entertainment schedule from 1978

Museum Collection Update....from pg 8

Check out the links below to see a 3D tour and video of the William Caldwell exhibit along with a wonderful story about John Augustus McNear



Copy link below and paste to your browser to view 3D tour.

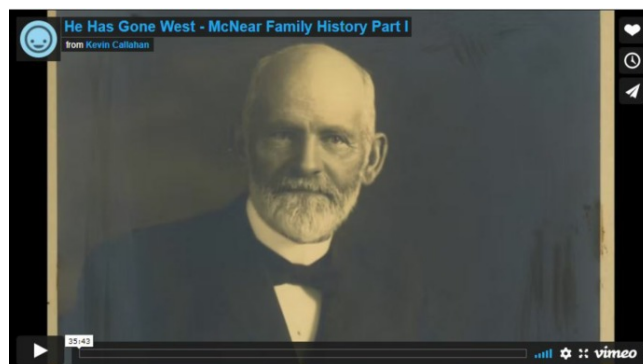
<https://my.matterport.com/show/?m=zoxsCR85t96>

A mighty thank you to Wayne Dunbar and Aftertec Advanced Imaging for the 3D scanning of the William "Cowboy" Caldwell Exhibit.



<https://vimeo.com/666405015>

Thanks to Skye Bailey and Tom Whitley for their time in creating a video highlighting the incredible workmanship of William Caldwell's folk art.

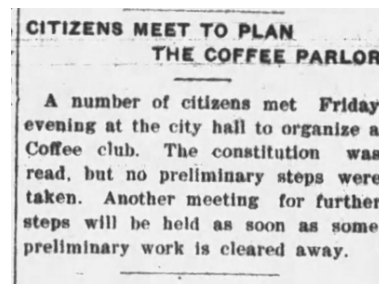
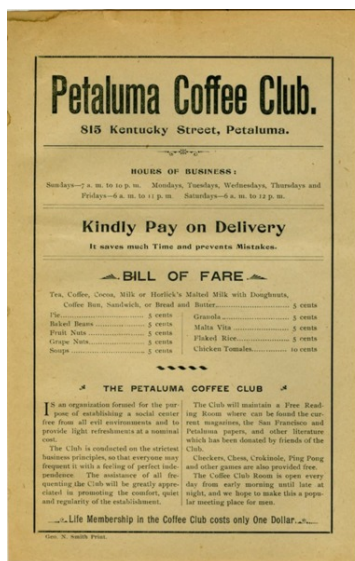


<https://vimeo.com/668717022/d7119a3b5c>

"He Has Gone West", the story of John Augustus McNear.

Historian Kevin Callahan was contacted by the east coast McNears to find out the story of what brought John A. McNear to Petaluma, California. Kevin dropped by the PHL&M last summer to go over some McNear family photos. He sent us the final cut.

Another Gem from the Barbara Webster Collection 120 Years Ago, February 1902



Advertisement flier for the Petaluma Coffee Club (left); its establishment was noted in a 1903 newspaper listing (right).

Life membership for \$1.00. Businessmen could meet there, play checkers or other popular board games, smoke, read the paper and discuss current events. It was also a place for young people to gather in the reading rooms.

Update from the Petalumans of Yesteryear

The POY are excitedly working behind the scenes on a series of upcoming events, both (hopefully) live programs and web-based videos!

— We're in the beginning stages of a presentation about what it actually took to get dressed 150 years ago! Look for our Historic Fashion show within the next couple of months!

— Some members of the POY will be participating in the opening night of the exhibit featuring the Petaluma Garden Club and Petaluma Woman's Club scheduled for April 8th, "Finding Our Roots." This exhibit tells the story of women of Petaluma and their impact on our community over the last 127 years.

POY members will represent such important contributors as Ida Belle McNear, first president of The Woman's Club of Petaluma (renamed The Petaluma Woman's Club), Clara Belle Ivancovich, Josie Hill, Nellie Denman and Addie Atwater president of the Ladies Improvement Club. The Opening night will be full of other surprises and guest appearances.

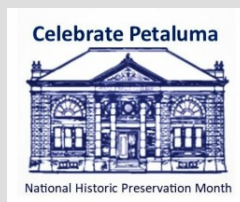
— Our annual History Trails Walk is coming up in April! This is your chance to meet some of Petaluma's most colorful, influential and fascinating characters, including John McNear, Benicia Vallejo, Lyman Byce (inventor of the practical incubator) and other important Petalumans, and may include surprise appearances! Along the way, historic sites will be pointed out, and each character will delight with their humorous, sad, and riveting stories, which took place right here in our historic town! Exact date TBD. (Please check the PMA's website for exact date and time info.)

— We are excited to announce that the POY will be participating in the Butter and Egg Days Parade this year. Be sure to attend and cheer us on.

— Our Historic Walking Tour season will begin on the first Saturday in May, plus selected Sundays that month (1st, 15th and 29th) celebrating National Historic Preservation Month!

All events are subject to change regarding whether they are held in person or are presented virtually, depending upon the current Covid restrictions in place at that time. Please consult our events page at Petalumamuseum.com for the latest information.

Petaluma Celebrates National Historic Preservation Month, May 2022



Every year in May, local preservation groups, state historical societies, and business and civic organizations across the country celebrate Preservation Month through events that promote historic places and heritage tourism, and that demonstrate the social and economic benefits of historic preservation.

Preservation Month began as National Preservation Week in 1973. In 2005, the National Trust of Historic Preservation extended the celebration to the entire month of May and declared it Preservation Month to provide an even greater opportunity to celebrate the diverse and unique heritage of our country's cities and states.

Visit our events page for the latest updates.

petalumamuseum.com/calendar-event/petaluma-celebrates-historic-preservation-month/

The Saddle Tree

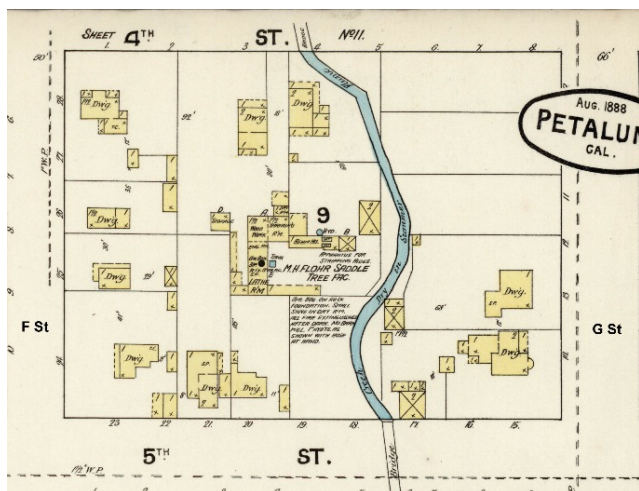
by Terry Park

Martin Haar opened his Petaluma saddle tree business in either 1855 or 1861 (depending on the source) and by 1883 the business was located in the middle of the block bounded by F and G Streets and Fourth and Fifth Streets. He was one of the best-known makers on the west coast and had the most extensive business outside of San Francisco, producing 2,500 saddle trees annually. All the wood was Sonoma Mountain oak except for some Oregon pine. He produced what was known as the California saddle tree and had the reputation of being the easiest riding saddle.



the useful life of the animal and ultimately provided for the development of the stirrup. The northern tribes of China are credited with designing the modern stirrup which ultimately spread into Europe. The height of the cantle and fork (pommel) evolved to meet the needs of two customers: a low cantle and fork for dressage and jumping became known

as the English saddle and the opposite for the western saddle brought to the Americas by the Spanish Conquistadors. The saddle horn was added to allow vaqueros and cowboys when roping cattle to tie off their rope instead of having to hold it.

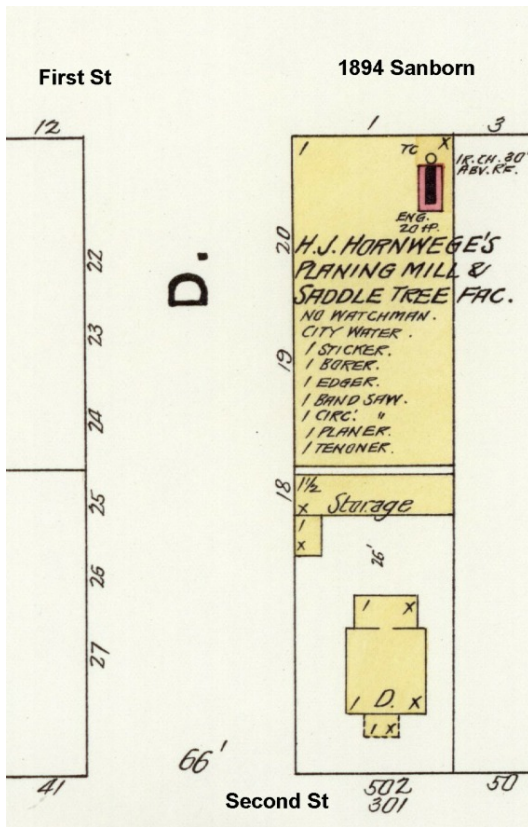


1888 Sanborn Map — M.H. Flohr Saddle Tree Fac.

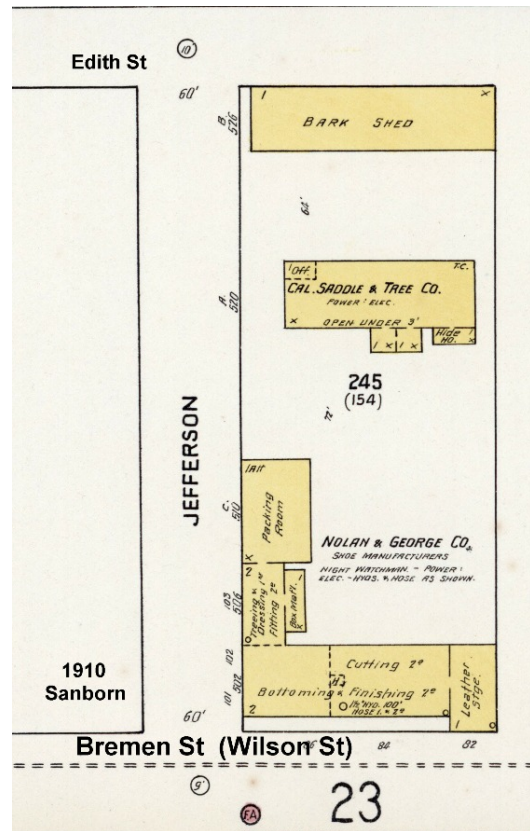
The domestication of the horse was as early as 4000 BC and the first saddle-like equipment was a cloth pad attached with straps used by the Assyrian cavalry around 700 BC. The first saddle frame consisting of parallel leather cushions was developed by the Scythians around 500-400 BC. The use of wood frames was of Asian design circa 200 BC, and another model was developed by the Romans. The solid tree design was a significant achievement in equally distributing the weight of the rider on the horse's spine prolonging

Back to Petaluma: Haar died in 1878 at the age of 56. Martin Flohr became the owner from 1882 to 1893 and sold to Henry J Horwege. Flohr became a wholesaler for Pabst Blue Ribbon beer and later owned Penn's Grove Saloon. By 1896, Flohr, age 52, was viewed as temperate, jovial, and a prominent member of the Druids and Petaluma fire department. A happily married man of 31 years with wife and two sons Mike and Charles. He held a position of respect, high esteem, and confidence in the community.

In October 1896 Flohr departed to San Francisco and indicated he would return on the last train that evening. A local woman, Mrs. Peterson, departed to San Francisco on the Steamer Gold after affectionately kissing her youngest son Willie goodbye, telling him to be a good boy, and giving him a letter and gold ring. When she did not return home, the letter, written in German, told of the elopement with Flohr. Peter Petersen, who was associated with Cedar Grove Park, arrived home and found the house deserted and all the family funds gone. The sons, age 16 and 12, said she had demanded their wages of late.



1894 Sanborn Map — H.J. Hornwege's Planing Mill & Saddle Tree Fac.



1910 Sanborn Map — Cal. Saddle & Tree Co.

Flohr's wife was described as an invalid, while Mrs. Peterson was about 35 and considered unusually good looking. Friends thought they were heading to Mexico but no effort was made to apprehend the runaways. Mike Flohr eventually became Petaluma police chief and later Sonoma County Sheriff.

By 1893 the Horwege saddle-tree business was at First and D Streets (where Rivertown Feed currently stands). The saddle-tree business was now run by Horwege's brother August, while Henry ran the wood planing mill. They and others had to compete against lower-priced saddle trees made by convict labor.

By 1906 the business name became California Saddle Tree Co., located at 520 Jefferson Street (the current Petaluma School District location). August was elected mayor in 1913 and out of business in 1916, along with many horse related businesses which had succumbed to the automobile including wagon makers, livery stables, blacksmiths, horseshoers and of course the buggy-whip makers.

Next up in the series of neighborhood businesses is the story of a steam laundry.



Saddle Tree

Don Siemens: Another Artist's Eye with a Camera

by Solange Russek, Collections Manager



No offense, Joe Wayne! I make that comparison after seeing Don's photographic images of the pastoral scenes that he has captured over the last five decades in Sonoma County. Joe took portraits, Don recorded landscapes; together they capture the essence of our local history.

Born and raised in Lafayette, California, he was fortunate to have a neighbor who took him under his wing and taught him the incredible beauty of nature. That neighbor was Harry Curieux Adamson (1916-

2012), a well renowned artist who painted waterfowl and wildlife after World War II.

Camera in hand, off Don went capturing the beauty of nature with his Brownie and Instamatic cameras! From Mexico to Canada and New York, he photographed anything and everything that caught his eye.

Newly settled in Petaluma in 1971, Don commuted to San Francisco and was supervisor of numerous labs ranging from the Veteran's Administration to San Francisco's Children Hospital, from which he retired.

Don had the pleasure of meeting former Petaluma mayor Helen Putnam who was able to grant him access inside the towers and atop the Golden Gate Bridge to photograph the sites.

As he drove around the country roads around Petaluma and Sonoma, he would stop to take pictures of the pastoral lands. At times, ranchers who were working near the road would converse with Don. And so developed Don's lasting friendships with Silvio Piccinotti and his team of horses and wagons, the Cardoza family and many others who were lucky to get to know him and his trusty camera.

The many images Don had captured over the years represent days gone by in rural Sonoma County. The PMA is planning a full exhibit of his work in the late summer and fall of 2023.

Included here are but a few from Don's work to whet your appetite.

The PMA is grateful to Don for his donation of pastoral photographs of rural and local scenes of Petaluma.



©PHL&M / photo credit Don Siemens



©PHL&M / photo credit Don Siemens



©PHL&M / photo credit Don Siemens



©PHL&M / photo credit Don Siemens

Thank you to our 2021 Annual Appeal Donors

John & Pam Agnew	Sarah Fleming	Diane & Christopher Olson
Linda Alexander	Kevin Ford	Donald Patterson
Bill Allen	Alice & Donald Forsyth	Brenda Paupst
Kim Arfsten	Jim Foster	Gwen Petro / <i>in memory</i> <i>of Donald P. Petro</i>
Lewis & Janet Baer / <i>thank you</i> <i>to Clint Gilbert</i>	Bruce Foster / <i>in honor</i> <i>of Sophie Vanden Heuvel</i>	Jeff & Sue Bates Pintar
Kathy Barron-Fries	Susan Frym	Susan Powers Kane
Christa Bechler	Angel Garganta & Michael Schwarz	Greg Ramos
Shirley Blum	Terry & Alena Kosewic	Susan Repke-Rice
Renate & Martin Bohn	Marsha Hansen	Tim & Deborah Riddle
George & Bonna Benedetti-Flynn	Kay Hardy	Gloria Robinson
Steve Bosshard & Carolyn Carswell	Kate Hawker	Adrienne & Martin "Buzz" Rodgers
Steve & Linda Buffo / <i>in memory</i> <i>of Barbara Harden & Bill Hammerman</i>	Miriam Hodge	Emily Roeder
Karl Bundesen / <i>in memory</i> <i>of Herb & Barb Bundesen</i>	Celeste Hoffman	Angela Ryan & Doug Stewart
Dennis & Carolyn Buss	Barb Holleran	Valerie & Greg Reisinger / <i>in memory</i> <i>of Leo Ghirardelli</i>
Bonnie Carpenter	Carole Hyman & Peter Taines	Jerrene & Raymond Rogers
Carol Casselman	Marie Isabel Girolo	Susan Salenger
Nino & Elaine Cerruti	Gary & Lynn Imm	David & Rita Schaefer
Karen Chambliss-Abraham	Diane Judd & Ron Krempetz	Kit & Steve Schlich
Stephen Collins	Megan Kelly	John Sheehy & Laurie Szujewska <i>in memory of Topsy Agius</i>
Carol Cook	Lucy Kortum	Michael & Lauren Slade
Clark & Susan Coolidge	Steven Lafranchi	Marilyn Sisler
Tom & Linda Corbett	Peter Langecker	Tina Snell
Laura & Jim Cornaggia	Jennifer Laporte	Kaye Stack
Demetrius Countouriotis	Mary Lill Lee	Clarice Stasz
Steve & Debbie Countouriotis	Rose Li / <i>in memory of Louis Magnotti</i>	Loretta Stoddard
Charles Craig	Sid & Gerry Lipton	James & Patricia Swan
Kerry Davison	Gary Lyman	Eric & Mary Ann Swanson
Don & Sue Deal	L. Marvel Gardner	Mary Tilbury / <i>in memory</i> <i>of Sally Tilbury</i>
Dennis & Charlene Deen	Jean McClellan	Theresa Toombs
Jeanne DeLucca	William & Vicki McDill	Carolyn Torliatt
Pat Donegan	Debbie & Keith McNeil	Royce & Carolee Van Bebber
Carol & Andy Eber	Jane & David Meyers	Betty Vanden Heuvel
Paul & Sharon Eklof	Diane Mickelson	Larry & Jan Vannucci
Sue Edwards	Carl & Kris Molesworth	Carol Weisker
Kathleen Favot-Blanquie	Len Nelson	Bill Wolpert
Ted Feldman	Tim & Lori Nelson	Peter & Meg Wozniak
June Ferguson	Harry & Ginger Nieuwboer	Lucienne Wurr
Dan Fix	Bente Niles	
	Dustin O'Brien	
	Dale O'Connor	

Upcoming Exhibit:
June 10 – July 24, 2022

Local Ties:

Histories of the Petaluma & Haystack Railway,
Northwestern Pacific Railroad and
Petaluma & Santa Rosa Railway

Did you know Petaluma had the third railway in California?

Discover the fascinating history of our early local railroads while viewing “Local Ties”. The exhibit will showcase items from the PMA collection as well as joining forces with local rail historical societies. The Northwestern Pacific Railroad Historical Society (NWPRRHS) is excited to display their extensive rail history of the area. The Petaluma Trolley will share the story of the Petaluma & Santa Rosa Railway (and the downtown trestle).

Models of trolley cars of the Petaluma & Santa Rosa Railroad created by Richard Dornhelm will be exhibited in a custom Petaluma Trestle scene (originally displayed at the West County Museum in the Sebastopol Depot for their 100th anniversary).

We will also be showing vintage local rail videos and have a children’s activity table, so the whole family can enjoy!

Out Where Grass Begins

When the whole world just seems to radiate heat, there is solace in the country—out where the air is pure and sweet—you will find nature awaiting you with a smile.

For a little while just leave behind the worry; get away from worry and hum-drum to the delightful recreation that the woods and fields afford. You’ll go back better fitted for the wrangle of life.

GO ON AN INTERURBAN RIDE TO-NIGHT.

Petaluma and Santa Rosa Railroad Company



Skye Bailey as POY persona Julia Morgan points to the newly installed Petaluma Architecture wall. Skye and her daughter Rio Helmy volunteered their time to give it a fresh new look.

An ominous headline!
Dated Jan 5, 1926 in the Argus Courier

MANY PETALUMANS ILL WITH THE FLU

Many of the residents of this city are confined to their beds with the flu and are unable to attend to their usual occupations.

Will Adams, night clerk at Hotel Petaluma is confined to his room. Dr. and Mrs. John A. McNear and daughter Jeanne are suffering from the epidemic. Hiram Hopkins is at home with the flu. Mrs. G. P. Lovejoy is confined to her bed and whole families are ill with the disease. Ernest Meyer, city carrier of Route 2, left the postoffice to deliver the mail and dropped in his tracks unable to proceed. The work has been doubled for the other carriers as there are now two incapacitated.

Archive Collection Highlight

by Solange Russek, Collections Manager

“E Pluribus Unum” means, in Latin, “out of many, one.” In this case it’s E Pluribus Unum poulet! Or simply put, “here a chick, there a chick”!

Many Petaluma locals that either grew up here or moved here have seen many chicken themed images over and over again. We are always searching for something different in an old photo or a different angle from someone else’s camera. Well, here we have both! A new photo that I have not seen and at an angle from someone else’s camera!



2021-214 Barbara Webster Collection

Pictured on left:

Man on ladder working on the giant chicken that stood south of the city limits. The chicken frame is made of chicken wire, wood and plaster. This is one of many giant plaster chickens that had taken up roost in Petaluma. Stories of the past mentioned a “Friendly Feud” with football rivals that would set the structure ablaze.



2013-808-226A Jim Staley

Above: Giant Chicken across from the Tivoli Hotel (Now Traxx) Lakeville Hwy & East Washington Street.



2006-273-986 Bill Soberanes Collection

A giant chicken that sits on the south end of Petaluma. The structure reads: “We’re laying for you at the New Hotel Petaluma. Visit famous Lanai Room. Enjoy fine food in our coffee shop.”

Visit John Sheehy’s blog on the Lanai Room:
<https://petalumahistorian.com/tag/hotel-petaluma/>



2005-107-61
 Hoppy Hopkins Collection

Wayne Dunbar

(707) 773-9000

159 Kentucky Street, Ste. 2
Petaluma, CA 94952

wayne@aftertec.com

www.aftertec.ai.com

aftertec advanced
imaging



SMT SPAULDING
McCULLOUGH
& TANSIL LLP

WARREN L. DRANIT
ATTORNEY AT LAW

Tel 707 524 1900 Santa Rosa
Tel 707 283 0000 Petaluma
dranit@smlaw.com

90 South E Street Suite 200
Santa Rosa CA 95404

11 Western Avenue
Petaluma CA 94952
www.smlaw.com



STEVEN J. LAFRANCHI & ASSOCIATES, INC.
CIVIL ENGINEERS - LAND SURVEYORS - LAND PLANNERS

STEVEN J. LAFRANCHI, P.E., P.L.S.
PRESIDENT

PETALUMA THEATRE SQUARE
140 SECOND STREET • SUITE 312 • PETALUMA, CA 94952
TEL 707-762-3122 FAX 707-762-3239
steve@sjla.com

CLINT GILBERT
LIGHTING DESIGN

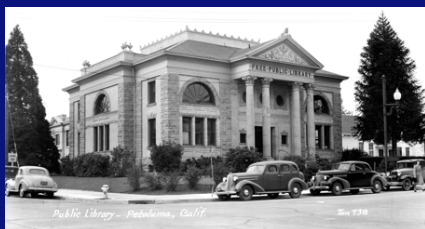
510-644-2701

CLINTBELOVE@GMAIL.COM

LOVEOFLIGHT.NET

*Make your next event
SPECIAL!*

CONSULTATION • DESIGN



Alexander J. "Zan" Stark (1889-1967)
"Public Library - Petaluma Calif."
Real photo postcard #738, March 1941

You have made the Petaluma Museum a part of your life. Now, we hope you will consider making the Petaluma Museum Association a part of your lasting legacy by leaving a gift in your will or trust.


Your bequest will ensure that the PMA remains a vibrant organization that welcomes our community in the historic Carnegie Library Building and passes down our history to the next generation of Petalumans.

To make the PMA a part of your estate plans, contact your financial planner. To find out more about how your will or trust might sustain our educational mission, contact Debbie Countouriotis, PMA Board President at dcountouriotis@petalumamuseum.com



Help the museum and reduce your taxes!

New rules for charitable deductions: The renewed COVID Relief bill continues to allow folks who do not itemize deductions to deduct up to \$300 (single/joint filers) and \$250 (married filing separately) in 2021. As well, folks who do not itemize can deduct up to \$300 (single/joint filers), and \$250 (married filing separately). Those who do itemize can deduct contributions up to 100% of their gross income (previous limit was 60%). A qualified charitable contribution is a charitable contribution (i) made in cash, (ii) for which a charitable contribution deduction is otherwise allowed, and (iii) that is made to certain publicly supported charities. The PMA is a qualified publicly supported charity. Our Federal Tax ID is #94-2826729. Please consult your tax advisor.




Connie Williams
History Room Librarian
Petaluma Regional Library

(707) 763-9801 x0722
100 Fairgrounds Drive
Petaluma, CA 94952
cwilliams@sonomalibrary.org

DISCOVER • LEARN • SHARE

CENTURY 21 Bundesen



Sandi Sullivan REALTOR® RENE® DRE #01975797
Linda Buffo REALTOR® SRES® DRE #01331391

Sandi 707.695.2747
Linda 707.696.9368
sandi.sullivan@bundesen.com
linda.buffo@bundesen.com

616 Petaluma Blvd. South
Petaluma, CA 94952

Serving one generation after another

Each office is independently owned and operated.



DEXTER HOWARD EVENTS

Christina Dumlao
Co-Founder & President

christina@dexterhowardevents.com
www.dexterhowardevents.com
707-774-6363 office
707-694-8917 mobile

Distinctive Events & Global Adventures

Christine Bennett, MA

Cleantech Communication, Inc.
1290 Marian Way
Petaluma, CA 94954
christine@cleantechcommunication.com

+1 925. 330. 4783



O: (707) . 763 . 5475
F: (707) . 778 . 8417
E: info@Wedgeroofing.com

WEDGE
ROOFING

5 Casa Grande Road, Petaluma, CA, 94954 Insured PL & PD Wedgeroofing.com



GREEN BUILDING ARCHITECTS

William B. Wolpert, Architect
707.789.0822
greenbuildingarchitects.com

**Become a
Business Sponsor, Company
Sponsor or
Corporate Sponsor and
enjoy the many benefits at those
membership levels**

Business Sponsors will have their cards appear in the newsletter four times a year.
Company or Corporate Sponsors will have their logo appear in the newsletter four times a year.

Join online at <https://www.petalumamuseum.com/join/>

Support your local museum!

M e m b e r s h i p

NEW MEMBERS

Skye Bailey, Jenny Belway, Janet Clover, Mark Dutka, Nick Gonsales, Deborah Richardson, Ken & Kat Savano, Ann Schlagenhauf, Esther Schau, David Spilman, Clarice Stasz, Thomas Whitley, Quin Winter

RENEWALS

Mary Beene, Christa Bechler, Gerald Besses, Shirley Blum, Ellen Bowen, Julie Brewer, Paula Butterworth, Maggie Carlson, Irene Carnazola, Nino & Elaine Cerruti, Kathy & Dennis Chambers, Lynn Cominsky, Tom & Linda Corbett, Gordon & Gail Cox, Patricia Cullinan, Maria doCeú & Madeleine Clare, Paul & Sharon Eklof, Sarah Fleming, Lilyan Frank, Mike & Kate Glose, Joanne Goebel, Pete & Ginnie Haas, Haroldine Hansen, Marvin Hanson, Christie Heller, Ray Hendess, Jennifer Jackson, Douglas & Linda Karr, Jan Klebe, Eileen & Ben Kutnick, Steven J Lafranchi, Linda Lipps, Steven Lovejoy, Patricia Marien, Dolores Frey McCloud, Brian Mealins & Cynthia Renfrew, Len Nelson, Diane & Christopher Olson, Diana Painter, Doris Pareas, Claire Pass, Brenda Paupst, Evelyn Pedroni, Wally Noriel, Paul North, Khaleghi Quinn, Adrienne & Martin "Buzz" Rodgers, Angela Ryan, Richard & Joyce Silva, Carol Sachal, Pat Skinner, Michael & Lauren Slade, Catherine Spector, Eric & Mary Ann Swanson, Marilyn Thompson, Brian Tolson, Carolyn Torliatt, Gail Unzelman, Steve and Kathleen vonRaesfeld, Roger & Eileen Weeks, Carol Weisker, Pamela Williams, Jack Withington

DONATIONS

Maria do Ceú & Madeleine Clare, Dolores Frey McCloud, Regina Ray, Carolyn Torliatt

LIFE MEMBERS

Linda Adams & Ken Larson, Mr. & Mrs. Marv Ashman, Bacchus Real Estate, Garth Bixler & Steven Barclay, Teresa Barrett, Ron Bausman & Art Wagner, Jim Becker, David Best & Margaret Roth, Ann & Gordon Blumenfeld, Marilyn Bragdon, Tom & Kathy Brandal, Virginia Breedlove, Paul Canorro & Kelly Collins, Joseph & Carol Castillo, Susan Morvay Chappell, Coddling Foundation, Clark & Susan Coolidge, James and Liz Cohee, Steve & Judy Collins, Jim & Lori Cornaggia, John Cota, Judy Curtis, Angela E. De Carli, Daniel & Elissa DeCaro & Family, Dennis & Charlene Deen, Marvin & Shirley Dolowitz, Karen & James Ely, June Ferguson, Bonna & George Flynn, C. Michael Forrest, Alice & Donald Forsyth, Jim & Kris Foster, Terry Fraser, Paula Freund & Paul Heavenridge, Kathy & Richard Fries & Family, George & Margaret Gambonini & Family, Marvel Gardner, Cheryl & Derlin German, Marie Isabel Girolo, Robert Girolo, Alexa Glockner, Ken & Annette Goltermann Family, Margaret Gossett, Kathy Greene, Connie Hammerman, Matt & Ginny Hautau, Mike & Beth Healy, Toby & Pat Herfindal, Ann Hobrecht, Miriam Hodge, Timothy & Marianne Hurley, Gary & Lynn Imm, Carol Isaak, Helen Issel, Toby Kaehler, William & Denise Kane, Roanne & Davis Kaplow, Steve & Karen Kemmerle, Lucy Kortum, Terry Kosewic, Daniel Krieg, Jack Krout, Kathleen LaRusso, David & Mary Lee, Rollie & Shirley Leeburg, Catherine Lehmann, Michael Lennon, Paul & Marlene Lewis, Blanch Lieb, Sid & Gerry Lipton, Connie Brandner Loughary, Colleen Mahoney, Theresa & Peter Mahoney, Amy Malaise & Gary Fusco, Peter Masi/Master Cleaners, Evelyn Matteri, Elizabeth McBride & Don Shaw, Shirley B. McDonald, Mc Dowell Drug Task Force, James & Sue Mc Isaac, Keith & Debbie McNeil, Robert & Virginia Merwin, Max Mickelsen, Flora Mickles, Pierre & Sonja Miremont, Montoya & Associates, Ann Moreno, Tim & Lori Nelson, Tammara Norman & Edwin Hamilton, Dustin O'Brien, Mike O'Brien, Ross Parkerson, John & Karen Perlis, Edward Peterson, Ray & Ettamarie Peterson, Charles & Mary Pheil, Russel Pleech, James Power Millwork, Lawrence Reed, Dan & Ann Reed, Ed & Bernadette Ricci, Tim & Deborah Riddle, Katherine & William Rinehart, Walter & Emily Roeder, Rotary Club of Petaluma, Jerry Roy, Gloria Salick, Warren & Susie Salmons, Nancy Sasser, Kit & Steve Schlich, Richard & Lucille Sharke, Jeff Smith & Alicia Wallace, Nicole & Dave Snider, Skip Sommer, Springfield Place, Kaye Stack, Clarice Stasz, Thomas & Mary Stelzner, Elaine & Christopher Stevick, Barbara Tornberg, Evan Williams & Elizabeth Tyree, UBS Financial Services, Gene & Lenore Urbain, Larry & Jan Vannucci, Vietnam Veterans of America, Chapter 563, Susan Villa & Family, Volpi's Italian Market, Michael & Elaine Von der Porten, Mary Renner & Linda Vourlogianes, Marcie Waldron, Ruth Walker, Olga Walker, Judy Walters, Jan Widdowson, Lauren Williams, Sarah Young, Scott & Meredith Young, Nick Zaillian, Ruth Zveinieks



MEMBERSHIP BENEFITS & CATEGORIES

BASIC BENEFITS OF ALL MEMBERSHIP CATEGORIES:

- Discounted admission to temporary exhibits (admission to the library & permanent exhibits is free to all)
- Reserved seating at the Butter & Egg Parade
- Subscription to and acknowledgement in the **PMA** newsletter
- Personalized membership card
- 10% off Museum store merchandise
- 10% off gift memberships
- Invitations to previews & receptions

INDIVIDUAL \$35

All Basic Benefits
(\$20 memberships are available in this category to: Seniors, Educators, Students. Military is free)

FAMILY / DUAL \$70

All Basic Benefits, PLUS:
• Extension of Basic Benefits to an additional adult & children in the same household up to age 17
• Two personalized membership cards

RECIPROCAL MUSEUM MEMBERSHIP PRIVILEGES - "Museum Goer" Benefit

If you join the **PMA** at the Supporter level (\$125) or higher, you will receive free or discounted admission to more than 600 museums in the U.S. Some of the top Bay Area participating museums are:

Asian Art Museum • **Walt Disney Family Museum** • **de Young Museum** • **Legion of Honor**
CA Historical Society Museum • **Charles M. Schulz Museum** • **Sonoma County Museum**

SUPPORTER \$125

All Family / Dual Benefits, PLUS:
• **Reciprocal Museum Membership Privileges**

BUSINESS SPONSOR \$150

All Supporter Benefits, PLUS:
• Your business card in the **PMA** newsletter

PATRON \$400

All Supporter Benefits, PLUS:
• Personalized exhibit tour for you and 10 guests
• Listing of your name on the Museum's Donor Wall

COMPANY SPONSOR \$500

All Patron Benefits, PLUS:
• Your company logo in the **PMA** newsletter

BENEFACTOR \$750 +

All Patron Benefits, PLUS:
• Opportunity to be named the benefactor of a temporary exhibit or annual program

CORPORATE SPONSOR \$1,000 +

All Benefactor Benefits, PLUS:
• Your corporation's logo in the **PMA** newsletter

..... Please detach and return the portion below with your payment method.

YES! I want to join the PMA at the level of:

Name: _____

Address: _____

City/State: _____

Zip: _____ Phone: _____

Email: _____

All membership dues are valid for one year beginning the month of enrollment and are tax deductible as provided by law.

If you prefer, you can join online at petalumamuseum.com, or call 707-778-4398

Payment Options:

Enclosed is my check made payable to the
Petaluma Museum Association

Charge \$ _____ to my
Visa MasterCard

Card #: _____

Expiration: ____ / ____ 3-digit code: ____

Signature: _____

Petaluma Museum Association
Petaluma Historical Library & Museum
20 Fourth Street
Petaluma, CA 94952-3004